

Anti-ALDH6A1 antibody (262-272) (STJ72396)

STJ72396

GENERAL INFORMATION

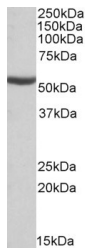
| | |
|--------------------------|--|
| Product Type | Primary antibodies |
| Short Description | Goat polyclonal antibody anti-ALDH6A1 (262-272) is suitable for use in ELISA and Western Blot research applications. |
| Applications | Pep-ELISA, WB |
| Host/Source | Goat |
| Reactivity | Human, Mouse, Rat, Dog, Cow, Pig |

PRODUCT PROPERTIES

| | |
|----------------------------|---|
| Clonality | Polyclonal |
| Clone ID | |
| Concentration | 0.5 mg/mL |
| Conjugation | Unconjugated |
| Purification | Purified from goat serum by ammonium sulphate precipitation followed by antigen affinity chromatography using the immunizing peptide. |
| Dilution Range | WB-0.1-0.3µg/ml IHC-5µg/ml ELISA-antibody detection limit dilution 1:32000. |
| Formulation | 0.5 mg/ml in Tris saline, 0.02% sodium azide, pH7.3 with 0.5% bovine serum albumin. NA |
| Isotype | IgG |
| Storage Instruction | Store at -20 on receipt and minimise freeze-thaw cycles. |

TARGET INFORMATION

| | |
|---------------------------|-------------|
| Gene ID | 4329 |
| Gene Symbol | ALDH6A1 |
| Uniprot ID | MMSA_HUMAN |
| Immunogen | |
| Immunogen Region | 262-272 |
| Specificity | |
| Immunogen Sequence | SNKAGEYIFER |



STJ72396 (0.1 µg/ml) staining of Mouse Kidney lysate (35 µg protein in RIPA buffer). Primary incubation was 1 hour. Detected by chemiluminescence.

This product is suitable for in-vitro studies under the RESEARCH USE ONLY [RUO] licence. This product must not be used as for diagnostic or other medical purposes.
St John's Laboratory Ltd, Knowledge Dock Business Centre, University Way, London, E16 2RD | Tel: 0208 223 3081