

## Anti-GRAMD3 antibody (Internal) (STJ72361)

STJ72361

### GENERAL INFORMATION

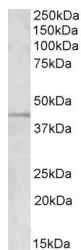
<b>Product Type</b>	Primary antibodies
<b>Short Description</b>	Goat polyclonal antibody anti-GRAMD3 (Internal) is suitable for use in ELISA and Western Blot research applications.
<b>Applications</b>	Pep-ELISA, WB-Trf
<b>Host/Source</b>	Goat
<b>Reactivity</b>	Human, Mouse, Rat, Dog, Cow

### PRODUCT PROPERTIES

<b>Clonality</b>	Polyclonal
<b>Clone ID</b>	
<b>Concentration</b>	0.5 mg/mL
<b>Conjugation</b>	Unconjugated
<b>Purification</b>	Purified from goat serum by ammonium sulphate precipitation followed by antigen affinity chromatography using the immunizing peptide.
<b>Dilution Range</b>	WB-1-3µg/ml ELISA-antibody detection limit dilution 1:4000.
<b>Formulation</b>	0.5 mg/ml in Tris saline, 0.02% sodium azide, pH7.3 with 0.5% bovine serum albumin. NA
<b>Isotype</b>	IgG
<b>Storage</b>	Store at -20 on receipt and minimise freeze-thaw cycles.
<b>Instruction</b>	

### TARGET INFORMATION

<b>Gene ID</b>	65983
<b>Gene Symbol</b>	GRAMD2B
<b>Uniprot ID</b>	GRM2B_HUMAN
<b>Immunogen</b>	
<b>Region</b>	Internal
<b>Specificity</b>	This antibody is expected to recognize all reported isoforms (NP_001139791.1; NP_076416.2; NP_001139792.1; NP_001139793.1; NP_001139794.1).
<b>Immunogen Sequence</b>	QTPESENSRD



STJ72361 (1µg/ml) staining of Human Temporal Cortex lysate (50µg protein in RIPA buffer). Primary incubation was 1 hour. Detected by chemiluminescence.