

Anti-PPPDE1/PNAS4 antibody (Internal) (STJ72355)

STJ72355

GENERAL INFORMATION

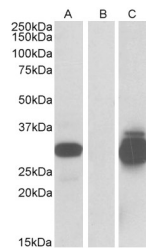
Product Type	Primary antibodies
Short Description	Goat polyclonal antibody anti-PPPDE1/PNAS4 (Internal) is suitable for use in ELISA, Western Blot and Immunohistochemistry research applications.
Applications	Pep-ELISA, WB, IHC
Host/Source	Goat
Reactivity	Human, Mouse, Rat, Dog, Cow, Pig

PRODUCT PROPERTIES

Clonality	Polyclonal
Clone ID	
Concentration	0.5 mg/mL
Conjugation	Unconjugated
Purification	Purified from goat serum by ammonium sulphate precipitation followed by antigen affinity chromatography using the immunizing peptide.
Dilution Range	IHC-10µg/ml ELISA-antibody detection limit dilution 1:32000.
Formulation	0.5 mg/ml in Tris saline, 0.02% sodium azide, pH7.3 with 0.5% bovine serum albumin. NA
Isotype	IgG
Storage Instruction	Store at -20 on receipt and minimise freeze-thaw cycles.

TARGET INFORMATION

Gene ID	51029
Gene Symbol	DES12
Uniprot ID	DES12_HUMAN
Immunogen	
Immunogen Region	Internal
Specificity	
Immunogen Sequence	ELGKEYKGNAYH



HEK293 lysate (10µg protein in RIPA buffer) overexpressing Human PPPDE1 with C-terminal MYC tag probed with STJ72355 (0.5µg/ml) in Lane A and probed with anti-MYC Tag (1/5000) in lane C. Mock-transfected HEK293 probed with STJ72355 (1mg/ml) in Lane B. Primary incubations were for 1 hour. Detected by chemiluminescence.