

Anti-SNAP23 antibody (135-144) (STJ72318)

STJ72318

GENERAL INFORMATION

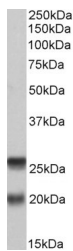
Product Type	Primary antibodies
Short Description	Goat polyclonal antibody anti-SNAP23 (135-144) is suitable for use in ELISA, Western Blot and Immunohistochemistry research applications.
Applications	Pep-ELISA, WB, IHC
Host/Source	Goat
Reactivity	Human, Mouse, Rat, Dog, Cow

PRODUCT PROPERTIES

Clonality	Polyclonal
Clone ID	
Concentration	0.5 mg/mL
Conjugation	Unconjugated
Purification	Purified from goat serum by ammonium sulphate precipitation followed by antigen affinity chromatography using the immunizing peptide.
Dilution Range	WB-0.2-0.6µg/ml ELISA-antibody detection limit dilution 1:2000.
Formulation	0.5 mg/ml in Tris saline, 0.02% sodium azide, pH7.3 with 0.5% bovine serum albumin. NA
Isotype	IgG
Storage Instruction	Store at -20 on receipt and minimise freeze-thaw cycles.

TARGET INFORMATION

Gene ID	8773
Gene Symbol	SNAP23
Uniprot ID	SNP23_HUMAN
Immunogen	
Immunogen Region	135-144
Specificity	This antibody is expected to recognize both isoforms (NP_003816.2; NP_570710.1). Amino acid numbering in name refers to NP_003816.2 sequence.
Immunogen Sequence	TDKADTNDR



STJ72318 (0.2µg/ml) staining of PBMC lysate (35µg protein in RIPA buffer). Primary incubation was 1 hour. Detected by chemiluminescence.

This product is suitable for in-vitro studies under the RESEARCH USE ONLY [RUO] licence. This product must not be used as for diagnostic or other medical purposes.
St John's Laboratory Ltd, Knowledge Dock Business Centre, University Way, London, E16 2RD | Tel: 0208 223 3081