

Anti-ETFA antibody (139-152) (STJ72291)

STJ72291

GENERAL INFORMATION

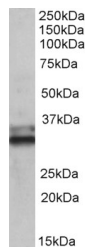
| | |
|--------------------------|---|
| Product Type | Primary antibodies |
| Short Description | Goat polyclonal antibody anti-ETFA (139-152) is suitable for use in ELISA, Western Blot and Immunohistochemistry research applications. |
| Applications | Pep-ELISA, WB, IHC |
| Host/Source | Goat |
| Reactivity | Human, Mouse, Rat, Pig, Dog, Cow |

PRODUCT PROPERTIES

| | |
|----------------------------|---|
| Clonality | Polyclonal |
| Clone ID | |
| Concentration | 0.5 mg/mL |
| Conjugation | Unconjugated |
| Purification | Purified from goat serum by ammonium sulphate precipitation followed by antigen affinity chromatography using the immunizing peptide. |
| Dilution Range | WB-0.1-0.3µg/ml IHC-5µg/ml ELISA-antibody detection limit dilution 1:16000. |
| Formulation | 0.5 mg/ml in Tris saline, 0.02% sodium azide, pH7.3 with 0.5% bovine serum albumin. NA |
| Isotype | IgG |
| Storage Instruction | Store at -20 on receipt and minimise freeze-thaw cycles. |

TARGET INFORMATION

| | |
|---------------------------|--|
| Gene ID | 2108 |
| Gene Symbol | ETFA |
| Uniprot ID | ETFA_HUMAN |
| Immunogen | |
| Immunogen Region | 139-152 |
| Specificity | This antibody is expected to recognize both isoforms (NP_000117.1; NP_001121188.1). Amino acid numbering in name refers to NP_000117.1 sequence) |
| Immunogen Sequence | KSPDTFVRTIYAGN |



STJ72291 (0.1µg/ml) staining of Human Colon lysate (35µg protein in RIPA buffer). Detected by chemiluminescence.