

Anti-ETFB/FP585 antibody (152-165) (STJ72289)

STJ72289

GENERAL INFORMATION

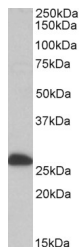
Product Type	Primary antibodies
Short Description	Goat polyclonal antibody anti-ETFB/FP585 (152-165) is suitable for use in ELISA, Immunofluorescence and Flow Cytometry research applications.
Applications	Pep-ELISA, IF, FC
Host/Source	Goat
Reactivity	Human, Mouse, Rat, Dog, Cow

PRODUCT PROPERTIES

Clonality	Polyclonal
Clone ID	
Concentration	0.5 mg/mL
Conjugation	Unconjugated
Purification	Purified from goat serum by ammonium sulphate precipitation followed by antigen affinity chromatography using the immunizing peptide.
Dilution Range	WB-1-3µg/ml IHC-Recommended concentration, 3-5µg/ml ELISA-antibody detection limit dilution 1:8000.
Formulation	0.5 mg/ml in Tris saline, 0.02% sodium azide, pH7.3 with 0.5% bovine serum albumin. NA
Isotype	IgG
Storage Instruction	Store at -20 on receipt and minimise freeze-thaw cycles.

TARGET INFORMATION

Gene ID	2109
Gene Symbol	ETFB
Uniprot ID	ETFB_HUMAN
Immunogen	
Immunogen Region	152-165
Specificity	This antibody is expected to recognize both reported isoforms (NP_001976.1; NP_001014763.1). Amino acid numbering in the name above refers to NP_001976.1).
Immunogen Sequence	QVTLEGDKLKVERE



STJ72289 (0.1µg/ml) staining of Human Liver lysate (35µg protein in RIPA buffer). Primary incubation was 1 hour. Detected by chemiluminescence.