

Anti-ALDH3B1 antibody (Internal) (STJ72275)

STJ72275

GENERAL INFORMATION

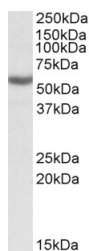
Product Type	Primary antibodies
Short Description	Goat polyclonal antibody anti-ALDH3B1 (Internal) is suitable for use in ELISA, Western Blot and Immunohistochemistry research applications.
Applications	Pep-ELISA, WB, IHC
Host/Source	Goat
Reactivity	Human, Mouse, Rat, Dog, Cow

PRODUCT PROPERTIES

Clonality	Polyclonal
Clone ID	
Concentration	0.5 mg/mL
Conjugation	Unconjugated
Purification	Purified from goat serum by ammonium sulphate precipitation followed by antigen affinity chromatography using the immunizing peptide.
Dilution Range	WB-0.3-1µg/ml ELISA-antibody detection limit dilution 1:16000.
Formulation	0.5 mg/ml in Tris saline, 0.02% sodium azide, pH7.3 with 0.5% bovine serum albumin. NA
Isotype	IgG
Storage Instruction	Store at -20 on receipt and minimise freeze-thaw cycles.

TARGET INFORMATION

Gene ID	221
Gene Symbol	ALDH3B1
Uniprot ID	AL3B1_HUMAN
Immunogen Region	Internal
Specificity	This antibody is expected to recognize isoform a (NP_000685.1) only. This antibody is not expected to cross react with ALDH3B2. NA Reported variants represent identical protein: NP_000685.1, NP_001154945.1
Immunogen Sequence	QDLHKSAFESEVSE



STJ72275 (0.3µg/ml) staining of K562 lysate (35µg protein in RIPA buffer). Primary incubation was 1 hour. Detected by chemiluminescence.

This product is suitable for in-vitro studies under the RESEARCH USE ONLY [RUO] licence. This product must not be used as for diagnostic or other medical purposes.
St John's Laboratory Ltd, Knowledge Dock Business Centre, University Way, London, E16 2RD | Tel: 0208 223 3081