

Anti-MEIS2 antibody (Internal) (STJ72247)

STJ72247

GENERAL INFORMATION

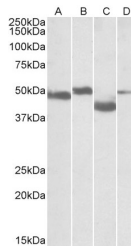
Product Type	Primary antibodies
Short Description	Goat polyclonal antibody anti-MEIS2 (Internal) is suitable for use in ELISA and Western Blot research applications.
Applications	Pep-ELISA, WB
Host/Source	Goat
Reactivity	Human, Mouse, Dog, Cow

PRODUCT PROPERTIES

Clonality	Polyclonal
Clone ID	
Concentration	0.5 mg/mL
Conjugation	Unconjugated
Purification	Purified from goat serum by ammonium sulphate precipitation followed by antigen affinity chromatography using the immunizing peptide.
Dilution Range	ELISA-antibody detection limit dilution 1:16000.
Formulation	0.5 mg/ml in Tris saline, 0.02% sodium azide, pH7.3 with 0.5% bovine serum albumin. NA
Isotype	IgG
Storage Instruction	Store at -20 on receipt and minimise freeze-thaw cycles.

TARGET INFORMATION

Gene ID	4212
Gene Symbol	MEIS2
Uniprot ID	MEIS2_HUMAN
Immunogen Region	Internal
Specificity	This antibody is expected to recognize reported Human isoforms a (NP_733777.1) , c (NP_733775.1) , and g (NP_758526.1) , and reported Mouse isoforms 3, 4 and 5 (NP_001153039.1, NP_001153040.1, NP_001153041.1). NB: The immunizing peptide shows no over
Immunogen Sequence	QSNRAGFLLDPSVSQ



STJ72247 (0.1 µg/ml) staining of Mouse Brain (lane A) , Rat Brain (lane B) , Mouse Thymus (lane C) and Rat Thymus (lane D) lysates (35µg protein in RIPA buffer). Primary incubation was 1 hour. Detected by chemiluminescence.

This product is suitable for in-vitro studies under the RESEARCH USE ONLY [RUO] licence. This product must not be used as for diagnostic or other medical purposes.
 St John's Laboratory Ltd, Knowledge Dock Business Centre, University Way, London, E16 2RD | Tel: 0208 223 3081