

Anti-Themis-Mouse antibody (C-Term) (STJ72200)

STJ72200

GENERAL INFORMATION

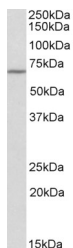
| | |
|--------------------------|------------------------------------------------------------------------------------------------------------------------------------------------|
| Product Type | Primary antibodies |
| Short Description | Goat polyclonal antibody anti-Themis-Mouse (C-Term) is suitable for use in ELISA, Western Blot and Immunohistochemistry research applications. |
| Applications | Pep-ELISA, WB, IHC |
| Host/Source | Goat |
| Reactivity | Mouse |

PRODUCT PROPERTIES

| | |
|----------------------------|---------------------------------------------------------------------------------------------------------------------------------------|
| Clonality | Polyclonal |
| Clone ID | |
| Concentration | 0.5 mg/mL |
| Conjugation | Unconjugated |
| Purification | Purified from goat serum by ammonium sulphate precipitation followed by antigen affinity chromatography using the immunizing peptide. |
| Dilution Range | WB-1-3µg/ml ELISA-antibody detection limit dilution 1:64000. |
| Formulation | 0.5 mg/ml in Tris saline, 0.02% sodium azide, pH7.3 with 0.5% bovine serum albumin. NA |
| Isotype | IgG |
| Storage Instruction | Store at -20 on receipt and minimise freeze-thaw cycles. |

TARGET INFORMATION

| | |
|---------------------------|----------------|
| Gene ID | |
| Gene Symbol | |
| Uniprot ID | |
| Immunogen | |
| Immunogen Region | C-Term |
| Specificity | |
| Immunogen Sequence | EERTINLPKSLKSH |



STJ72200 (0.3µg/ml) staining of Mouse Spleen lysate (35µg protein in RIPA buffer). Primary incubation was 1 hour. Detected by chemiluminescence.