

Anti-E2F4 antibody (Internal) (STJ72199)

STJ72199

GENERAL INFORMATION

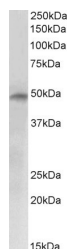
Product Type	Primary antibodies
Short Description	Goat polyclonal antibody anti-E2F4 (Internal) is suitable for use in ELISA, Western Blot, Immunofluorescence, Immunohistochemistry and Flow Cytometry research applications.
Applications	Pep-ELISA, WB, IF, IHC, FC
Host/Source	Goat
Reactivity	Human, Mouse, Dog, Cow

PRODUCT PROPERTIES

Clonality	Polyclonal
Clone ID	
Concentration	0.5 mg/mL
Conjugation	Unconjugated
Purification	Purified from goat serum by ammonium sulphate precipitation followed by antigen affinity chromatography using the immunizing peptide.
Dilution Range	WB-1-3µg/ml ELISA-antibody detection limit dilution 1:4000.
Formulation	0.5 mg/ml in Tris saline, 0.02% sodium azide, pH7.3 with 0.5% bovine serum albumin. NA
Isotype	IgG
Storage Instruction	Store at -20 on receipt and minimise freeze-thaw cycles.

TARGET INFORMATION

Gene ID	1874
Gene Symbol	E2F4
Uniprot ID	E2F4_HUMAN
Immunogen	
Immunogen Region	Internal
Specificity	
Immunogen Sequence	DPTGVLELPKELSE



STJ72199 (2µg/ml) staining of Human Brain (Cerebellum) lysate (35µg protein in RIPA buffer). Primary incubation was 1 hour. Detected by chemiluminescence.

This product is suitable for in-vitro studies under the RESEARCH USE ONLY [RUO] licence. This product must not be used as for diagnostic or other medical purposes.
St John's Laboratory Ltd, Knowledge Dock Business Centre, University Way, London, E16 2RD | Tel: 0208 223 3081