

## Anti-LSP1 antibody (C-Term) (STJ72167)

STJ72167

### GENERAL INFORMATION

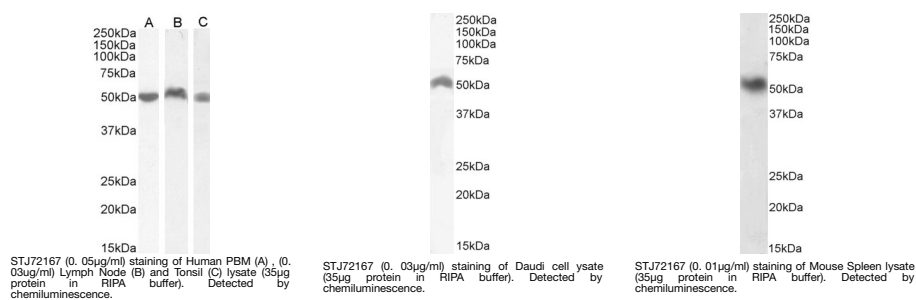
|                          |                                                                                                                  |
|--------------------------|------------------------------------------------------------------------------------------------------------------|
| <b>Product Type</b>      | Primary antibodies                                                                                               |
| <b>Short Description</b> | Goat polyclonal antibody anti-LSP1 (C-Term) is suitable for use in ELISA and Western Blot research applications. |
| <b>Applications</b>      | Pep-ELISA, WB                                                                                                    |
| <b>Host/Source</b>       | Goat                                                                                                             |
| <b>Reactivity</b>        | Human, Mouse, Rat, Dog, Cow                                                                                      |

### PRODUCT PROPERTIES

|                            |                                                                                                                                       |
|----------------------------|---------------------------------------------------------------------------------------------------------------------------------------|
| <b>Clonality</b>           | Polyclonal                                                                                                                            |
| <b>Clone ID</b>            |                                                                                                                                       |
| <b>Concentration</b>       | 0.5 mg/mL                                                                                                                             |
| <b>Conjugation</b>         | Unconjugated                                                                                                                          |
| <b>Purification</b>        | Purified from goat serum by ammonium sulphate precipitation followed by antigen affinity chromatography using the immunizing peptide. |
| <b>Dilution Range</b>      | IHC-3.75µg/ml<br>ELISA-antibody detection limit dilution 1:16000.                                                                     |
| <b>Formulation</b>         | 0.5 mg/ml in Tris saline, 0.02% sodium azide, pH7.3 with 0.5% bovine serum albumin. NA                                                |
| <b>Isotype</b>             | IgG                                                                                                                                   |
| <b>Storage Instruction</b> | Store at -20 on receipt and minimise freeze-thaw cycles.                                                                              |

### TARGET INFORMATION

|                           |                                                                                                                                                                                            |
|---------------------------|--------------------------------------------------------------------------------------------------------------------------------------------------------------------------------------------|
| <b>Gene ID</b>            | 4046                                                                                                                                                                                       |
| <b>Gene Symbol</b>        | LSP1                                                                                                                                                                                       |
| <b>Uniprot ID</b>         | LSP1_HUMAN                                                                                                                                                                                 |
| <b>Immunogen Region</b>   | C-Term                                                                                                                                                                                     |
| <b>Specificity</b>        | This antibody is expected to recognize both reported isoforms (NP_002330.1; NP_001013271.1). Reported variants represent identical protein: NP_001013273.1, NP_001013271.1, NP_001013272.1 |
| <b>Immunogen Sequence</b> | RYKFKVATGHGKYEKV                                                                                                                                                                           |



This product is suitable for in-vitro studies under the RESEARCH USE ONLY [RUO] licence. This product must not be used as for diagnostic or other medical purposes.  
 St John's Laboratory Ltd, Knowledge Dock Business Centre, University Way, London, E16 2RD | Tel: 0208 223 3081