

## Anti-LSP1 antibody (261-275) (STJ72166)

STJ72166

### GENERAL INFORMATION

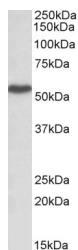
<b>Product Type</b>	Primary antibodies
<b>Short Description</b>	Goat polyclonal antibody anti-LSP1 (261-275) is suitable for use in ELISA, Western Blot and Immunohistochemistry research applications.
<b>Applications</b>	Pep-ELISA, WB, IHC
<b>Host/Source</b>	Goat
<b>Reactivity</b>	Human, Dog, Cow

### PRODUCT PROPERTIES

<b>Clonality</b>	Polyclonal
<b>Clone ID</b>	
<b>Concentration</b>	0.5 mg/mL
<b>Conjugation</b>	Unconjugated
<b>Purification</b>	Purified from goat serum by ammonium sulphate precipitation followed by antigen affinity chromatography using the immunizing peptide.
<b>Dilution Range</b>	ELISA-antibody detection limit dilution 1:16000.
<b>Formulation</b>	0.5 mg/ml in Tris saline, 0.02% sodium azide, pH7.3 with 0.5% bovine serum albumin. NA
<b>Isotype</b>	IgG
<b>Storage Instruction</b>	Store at -20 on receipt and minimise freeze-thaw cycles.

### TARGET INFORMATION

<b>Gene ID</b>	<a href="#">4046</a>
<b>Gene Symbol</b>	<a href="#">LSP1</a>
<b>Uniprot ID</b>	<a href="#">LSP1_HUMAN</a>
<b>Immunogen</b>	
<b>Immunogen Region</b>	261-275
<b>Specificity</b>	This antibody is expected to recognize both reported isoforms (NP_002330.1; NP_001013271.1). Reported variants represent identical protein: NP_001013273.1, NP_001013271.1, NP_001013272.1
<b>Immunogen Sequence</b>	ASTKSRWETGEVQAQ



STJ72166 (1µg/ml) staining of Peripheral Blood Lymphocytes lysate (55µg protein in RIPA buffer). Primary incubation was 1 hour. Detected by chemiluminescence.

This product is suitable for in-vitro studies under the RESEARCH USE ONLY [RUO] licence. This product must not be used as for diagnostic or other medical purposes.  
 St John's Laboratory Ltd, Knowledge Dock Business Centre, University Way, London, E16 2RD | Tel: 0208 223 3081