

Anti-CRISP2 antibody (77-89) (STJ72154)

STJ72154

GENERAL INFORMATION

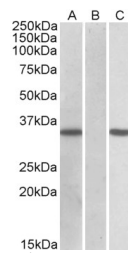
Product Type	Primary antibodies
Short Description	Goat polyclonal antibody anti-CRISP2 (77-89) is suitable for use in ELISA and Immunohistochemistry research applications.
Applications	Pep-ELISA, IHC
Host/Source	Goat
Reactivity	Human, Pig, Dog, Cow

PRODUCT PROPERTIES

Clonality	Polyclonal
Clone ID	
Concentration	0.5 mg/mL
Conjugation	Unconjugated
Purification	Purified from goat serum by ammonium sulphate precipitation followed by antigen affinity chromatography using the immunizing peptide.
Dilution Range	ELISA-antibody detection limit dilution 1:128000.
Formulation	0.5 mg/ml in Tris saline, 0.02% sodium azide, pH7.3 with 0.5% bovine serum albumin. NA
Isotype	IgG
Storage Instruction	Store at -20 on receipt and minimise freeze-thaw cycles.

TARGET INFORMATION

Gene ID	7180
Gene Symbol	CRISP2
Uniprot ID	CRIS2_HUMAN
Immunogen	
Immunogen Region	77-89
Specificity	Reported variants represent identical protein: NP_003287.1, NP_001135879.1, NP_001135889.1, NP_001135907.1, NP_001135880.1.
Immunogen Sequence	KCTLQHSDPEDRK



HEK293 lysate (10ug protein in RIPA buffer) overexpressing Human CRISP2 (RC205312) with C-terminal MYC tag probed with STJ72154 (0, 11ug/ml) in Lane A and probed with anti-MYC Tag (1/1000) in lane C. Mock-transfected HEK293 probed with STJ72154 (11ug/ml) in Lane B. Primary incubations were for 1 hour. Detected by chemiluminescence.

This product is suitable for in-vitro studies under the RESEARCH USE ONLY [RUO] licence. This product must not be used as for diagnostic or other medical purposes.
St John's Laboratory Ltd, Knowledge Dock Business Centre, University Way, London, E16 2RD | Tel: 0208 223 3081