

Anti-SNX1 antibody (Internal) (STJ72116)

STJ72116

GENERAL INFORMATION

Product Type	Primary antibodies
Short Description	Goat polyclonal antibody anti-SNX1 (Internal) is suitable for use in ELISA and Western Blot research applications.
Applications	Pep-ELISA, WB
Host/Source	Goat
Reactivity	Human, Mouse, Rat, Dog, Cow

PRODUCT PROPERTIES

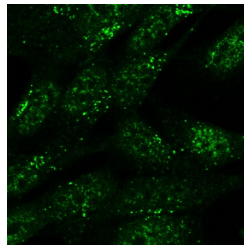
Clonality	Polyclonal
Clone ID	
Concentration	0.5 mg/mL
Conjugation	Unconjugated
Purification	Purified from goat serum by ammonium sulphate precipitation followed by antigen affinity chromatography using the immunizing peptide.
Dilution Range	WB-0.1-1µg/ml IHC-Recommended concentration, 3-5µg/ml ELISA-antibody detection limit dilution 1:64000.
Formulation	0.5 mg/ml in Tris saline, 0.02% sodium azide, pH7.3 with 0.5% bovine serum albumin. NA
Isotype	IgG
Storage Instruction	Store at -20 on receipt and minimise freeze-thaw cycles.

TARGET INFORMATION

Gene ID	6642
Gene Symbol	SNX1
Uniprot ID	SNX1_HUMAN
Immunogen	
Immunogen Region	Internal
Specificity	This antibody is expected to recognize isoform a and c (NP_003090.2; NP_690039.1).
Immunogen Sequence	TNSSKPQPTYEELE



STJ72116 (1µg/ml) staining of HeLa (A) and (0.1µg/ml) U2OS (B) cell lysate (35µg protein in RIPA buffer). Detected by chemiluminescence.



STJ72116 (5µg/ml) staining of formaldehyde-fixed SH5Y5Y and detected with Alexa 488 in confocal microscopy. Data obtained from Dr. Schallburg Nielsen, Aarhus University Denmark.

This product is suitable for in-vitro studies under the RESEARCH USE ONLY [RUO] licence. This product must not be used as for diagnostic or other medical purposes.
St John's Laboratory Ltd, Knowledge Dock Business Centre, University Way, London, E16 2RD | Tel: 0208 223 3081