

## Anti-SLCO1B3 antibody (Internal) (STJ72055)

STJ72055

### GENERAL INFORMATION

|                          |   |
|--------------------------|---|
| <b>Product Type</b>      | Primary antibodies  |
| <b>Short Description</b> | Goat polyclonal antibody anti-SLCO1B3 (Internal) is suitable for use in ELISA and Western Blot research applications. |
| <b>Applications</b>      | Pep-ELISA, WB   |
| <b>Host/Source</b>       | Goat  |
| <b>Reactivity</b>        | Human, Mouse, Dog   |

### PRODUCT PROPERTIES

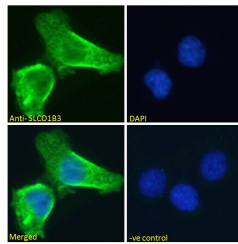
|                            |   |
|----------------------------|---|
| <b>Clonality</b>           | Polyclonal  |
| <b>Clone ID</b>            |   |
| <b>Concentration</b>       | 0.5 mg/mL   |
| <b>Conjugation</b>         | Unconjugated  |
| <b>Purification</b>        | Purified from goat serum by ammonium sulphate precipitation followed by antigen affinity chromatography using the immunizing peptide.   |
| <b>Dilution Range</b>      | WB-0.5-1µg/ml<br>IF-Strong expression of the protein seen in the membranes of A431 cells. 10µg/ml<br>FC-Flow cytometric analysis of HepG2 cells. 10ug/ml<br>ELISA-antibody detection limit dilution 1:128000. |
| <b>Formulation</b>         | 0.5 mg/ml in Tris saline, 0.02% sodium azide, pH7.3 with 0.5% bovine serum albumin.   |
| <b>Isotype</b>             | IgG   |
| <b>Storage Instruction</b> | Store at -20 on receipt and minimise freeze-thaw cycles.  |

### TARGET INFORMATION

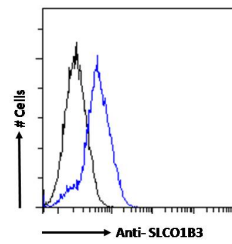
|                           |               |
|---------------------------|---------------|
| <b>Gene ID</b>            | 28234         |
| <b>Gene Symbol</b>        | SLCO1B3       |
| <b>Uniprot ID</b>         | SO1B3_HUMAN   |
| <b>Immunogen</b>          |               |
| <b>Immunogen Region</b>   | Internal      |
| <b>Specificity</b>        |               |
| <b>Immunogen Sequence</b> | NGTSPSPEIVEKD |



STJ72055 (1µg/ml) staining of HEK293 (A) and A431 (B) cell lysate (35µg protein in RIPA buffer). Detected by chemiluminescence.



STJ72055 Immunofluorescence analysis of paraformaldehyde fixed A431 cells, permeabilized with 0. 15% Triton. Primary incubation 1hr (10ug/ml) followed by Alexa Fluor 488 secondary antibody (2ug/ml) showing membrane staining. The nuclear stain is DAPI (blue). Negative control: Unimmunized goat IgG (10ug/ml) followed by Alexa Fluor 488 secondary antibody (2ug/ml).



STJ72055 Flow cytometric analysis of paraformaldehyde fixed HepG2 cells (blue line) permeabilized with 0. 5% Triton. Primary incubation overnight (10ug/ml) followed by Alexa Fluor 488 secondary antibody (1ug/ml). IgG control: Unimmunized goat IgG (black line) followed by Alexa Fluor 488 secondary antibody.

This product is suitable for in-vitro studies under the RESEARCH USE ONLY [RUO] licence. This product must not be used as for diagnostic or other medical purposes.

St John's Laboratory Ltd, Knowledge Dock Business Centre, University Way, London, E16 2RD | Tel: 0208 223 3081