

Anti-SRF antibody (Internal) (STJ71988)

STJ71988

GENERAL INFORMATION

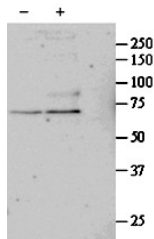
Product Type	Primary antibodies
Short Description	Goat polyclonal antibody anti-SRF (Internal) is suitable for use in ELISA, Western Blot and Immunohistochemistry research applications.
Applications	Pep-ELISA, WB, IHC
Host/Source	Goat
Reactivity	Human, Mouse, Dog, Cow

PRODUCT PROPERTIES

Clonality	Polyclonal
Clone ID	
Concentration	0.5 mg/mL
Conjugation	Unconjugated
Purification	Purified from goat serum by ammonium sulphate precipitation followed by antigen affinity chromatography using the immunizing peptide.
Dilution Range	ELISA-antibody detection limit dilution 1:32000.
Formulation	0.5 mg/ml in Tris saline, 0.02% sodium azide, pH7.3 with 0.5% bovine serum albumin.
Isotype	IgG
Storage Instruction	Store at -20 on receipt and minimise freeze-thaw cycles.

TARGET INFORMATION

Gene ID	6722
Gene Symbol	SRF
Uniprot ID	SRF_HUMAN
Immunogen	
Immunogen Region	Internal
Specificity	
Immunogen Sequence	QASPSRDSSTDLTQ



STJ71988 (1µg/ml) staining of untreated (first lane) and TGF-β-treated (second lane) primary cultured Human Lung fibroblast lysate. Primary incubated overnight at 4°C. Detected by western blot using chemiluminescence. Data kindly provided by Nickolai Dulin, Dept Medicine/Pulmonary, Chicago, USA.

This product is suitable for in-vitro studies under the RESEARCH USE ONLY [RUO] licence. This product must not be used as for diagnostic or other medical purposes.
 St John's Laboratory Ltd, Knowledge Dock Business Centre, University Way, London, E16 2RD | Tel: 0208 223 3081