

Anti-EPM2AIP1 antibody (Internal) (STJ71968)

STJ71968

GENERAL INFORMATION

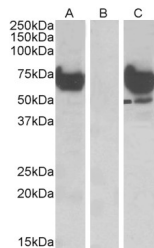
Product Type	Primary antibodies
Short Description	Goat polyclonal antibody anti-EPM2AIP1 (Internal) is suitable for use in ELISA, Immunofluorescence and Western Blot research applications.
Applications	Pep-ELISA, IF, WB
Host/Source	Goat
Reactivity	Human, Mouse, Rat, Dog

PRODUCT PROPERTIES

Clonality	Polyclonal
Clone ID	
Concentration	0.5 mg/mL
Conjugation	Unconjugated
Purification	Purified from goat serum by ammonium sulphate precipitation followed by antigen affinity chromatography using the immunizing peptide.
Dilution Range	IHC-Recommended concentration, 5-10µg/ml ELISA-antibody detection limit dilution 1:8000.
Formulation	0.5 mg/ml in Tris saline, 0.02% sodium azide, pH7.3 with 0.5% bovine serum albumin.
Isotype	IgG
Storage Instruction	Store at -20 on receipt and minimise freeze-thaw cycles.

TARGET INFORMATION

Gene ID	9852
Gene Symbol	EPM2AIP1
Uniprot ID	EPMIP_HUMAN
Immunogen	
Immunogen Region	Internal
Specificity	
Immunogen Sequence	TRNQHTLSQPLTDEH



HEK293 lysate (10µg protein in RIPA buffer) overexpressing Human EPM2AIP1 with DYKDDDDK tag probed with STJ71968 (1µg/ml) in Lane A and probed with anti-DYKDDDDK Tag (1/1000) in Lane C. Mock-transfected HEK293 probed with STJ71968 (1mg/ml) in Lane B. Primary incubations were for 1 hour. Detected by chemiluminescence.

This product is suitable for in-vitro studies under the RESEARCH USE ONLY [RUO] licence. This product must not be used as for diagnostic or other medical purposes.
St John's Laboratory Ltd, Knowledge Dock Business Centre, University Way, London, E16 2RD | Tel: 0208 223 3081