

Anti-Copine 1 antibody (C-Term) (STJ71933)

STJ71933

GENERAL INFORMATION

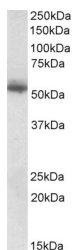
Product Type	Primary antibodies
Short Description	Goat polyclonal antibody anti-Copine 1 (C-Term) is suitable for use in ELISA and Western Blot research applications.
Applications	Pep-ELISA, WB
Host/Source	Goat
Reactivity	Human

PRODUCT PROPERTIES

Clonality	Polyclonal
Clone ID	
Concentration	0.5 mg/mL
Conjugation	Unconjugated
Purification	Purified from goat serum by ammonium sulphate precipitation followed by antigen affinity chromatography using the immunizing peptide.
Dilution Range	WB-0.1-0.3µg/ml ELISA-antibody detection limit dilution 1:16000.
Formulation	0.5 mg/ml in Tris saline, 0.02% sodium azide, pH7.3 with 0.5% bovine serum albumin.
Isotype	IgG
Storage Instruction	Store at -20 on receipt and minimise freeze-thaw cycles.

TARGET INFORMATION

Gene ID	8904
Gene Symbol	CPNE1
Uniprot ID	CPNE1_HUMAN
Immunogen Region	C-Term
Specificity	This antibody is expected to recognize isoform a and b (NP_003906.2; NP_690902.1). Reported variants represent identical protein: NP_690905.1, NP_690902.1, NP_690903.1, NP_690906.1, NP_690904.1, NP_690907.1, NP_690908.1.
Immunogen Sequence	APLKPLPPSAKDPA



STJ71933 (0.1 µg/ml) staining of Human Skin lysate (35 µg protein in RIPA buffer). Primary incubation was 1 hour. Detected by chemiluminescence.

This product is suitable for in-vitro studies under the RESEARCH USE ONLY [RUO] licence. This product must not be used as for diagnostic or other medical purposes.
St John's Laboratory Ltd, Knowledge Dock Business Centre, University Way, London, E16 2RD | Tel: 0208 223 3081