

Anti-DLL1 antibody (Internal) (STJ71886)

STJ71886

GENERAL INFORMATION

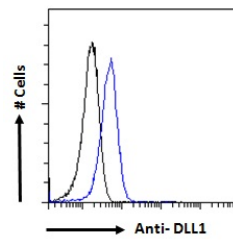
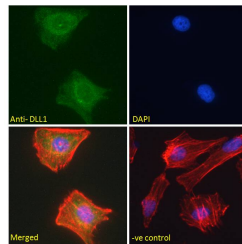
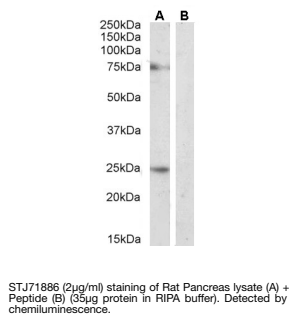
Product Type	Primary antibodies
Short Description	Goat polyclonal antibody anti-DLL1 (Internal) is suitable for use in ELISA and Immunohistochemistry research applications.
Applications	Pep-ELISA, IHC
Host/Source	Goat
Reactivity	Human, Mouse, Rat

PRODUCT PROPERTIES

Clonality	Polyclonal
Clone ID	
Concentration	0.5 mg/mL
Conjugation	Unconjugated
Purification	Purified from goat serum by ammonium sulphate precipitation followed by antigen affinity chromatography using the immunizing peptide.
Dilution Range	IF-Strong expression of the protein seen in the cytoplasm/membranes of HeLa cells. 10µg/ml ELISA-antibody detection limit dilution 1:16000.
Formulation	0.5 mg/ml in Tris saline, 0.02% sodium azide, pH7.3 with 0.5% bovine serum albumin.
Isotype	IgG
Storage Instruction	Store at -20 on receipt and minimise freeze-thaw cycles.

TARGET INFORMATION

Gene ID	28514
Gene Symbol	DLL1
Uniprot ID	DLL1_HUMAN
Immunogen	
Immunogen Region	Internal
Specificity	
Immunogen Sequence	ATQRHLTVGEEWSQD



This product is suitable for in-vitro studies under the RESEARCH USE ONLY [RUO] licence. This product must not be used as for diagnostic or other medical purposes.
St John's Laboratory Ltd, Knowledge Dock Business Centre, University Way, London, E16 2RD | Tel: 0208 223 3081