

## Anti-CEP290 antibody (Internal) (STJ71812)

STJ71812

### GENERAL INFORMATION

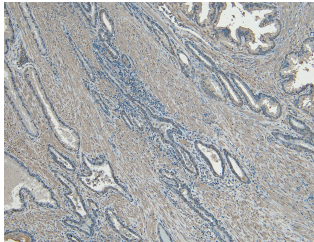
<b>Product Type</b>	Primary antibodies
<b>Short Description</b>	Goat polyclonal antibody anti-CEP290 (Internal) is suitable for use in ELISA and Western Blot research applications.
<b>Applications</b>	Pep-ELISA, WB
<b>Host/Source</b>	Goat
<b>Reactivity</b>	Human

### PRODUCT PROPERTIES

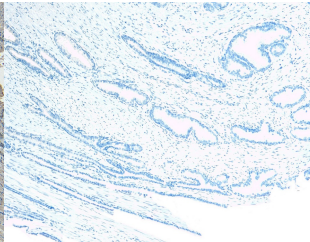
<b>Clonality</b>	Polyclonal
<b>Clone ID</b>	
<b>Concentration</b>	0.5 mg/mL
<b>Conjugation</b>	Unconjugated
<b>Purification</b>	Purified from goat serum by ammonium sulphate precipitation followed by antigen affinity chromatography using the immunizing peptide.
<b>Dilution Range</b>	IHC-5-7µg/ml ELISA-antibody detection limit dilution 1:128000.
<b>Formulation</b>	0.5 mg/ml in Tris saline, 0.02% sodium azide, pH7.3 with 0.5% bovine serum albumin.
<b>Isotype</b>	IgG
<b>Storage Instruction</b>	Store at -20 on receipt and minimise freeze-thaw cycles.

### TARGET INFORMATION

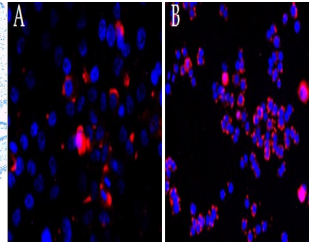
<b>Gene ID</b>	80184
<b>Gene Symbol</b>	CEP290
<b>Uniprot ID</b>	CE290_HUMAN
<b>Immunogen</b>	
<b>Immunogen Region</b>	Internal
<b>Specificity</b>	Despite similarity of the immunizing peptide with the mouse protein, this antibody was demonstrated to weak for mouse Cep290.
<b>Immunogen Sequence</b>	RNSKHLKQQQYRAEN



STJ71812 (5µg/ml) staining of paraffin embedded Human Prostate. Heat induced antigen retrieval with citrate buffer pH 6, HRP-staining.



STJ71812 Negative Control showing staining of paraffin embedded Human Prostate, with no primary antibody.



STJ71812 (2.5µg/ml) overnight staining of cell lines OPCT-1 (A) and MDA468 (B) with Alexa Fluor 568 (red) and nuclear counter staining with DAPI (blue). Data kindly provided by Dr S. McArdle, and obtained by Sumanjeet Malhi, John van Geest Research Centre, Nottingham, UK