

Anti-WIZ antibody (Internal) (STJ71806)

STJ71806

GENERAL INFORMATION

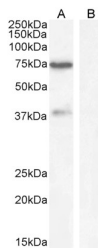
Product Type	Primary antibodies
Short Description	Goat polyclonal antibody anti-WIZ (Internal) is suitable for use in ELISA, Western Blot and Immunohistochemistry research applications.
Applications	Pep-ELISA, WB, IHC
Host/Source	Goat
Reactivity	Human, Mouse, Rat

PRODUCT PROPERTIES

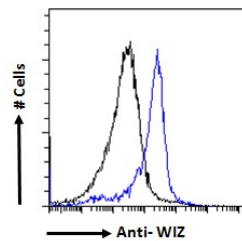
Clonality	Polyclonal
Clone ID	
Concentration	0.5 mg/mL
Conjugation	Unconjugated
Purification	Purified from goat serum by ammonium sulphate precipitation followed by antigen affinity chromatography using the immunizing peptide.
Dilution Range	FC-Flow cytometric analysis of HeLa cells. 10ug/ml ELISA-antibody detection limit dilution 1:2000.
Formulation	0.5 mg/ml in Tris saline, 0.02% sodium azide, pH7.3 with 0.5% bovine serum albumin.
Isotype	IgG
Storage Instruction	Store at -20 on receipt and minimise freeze-thaw cycles.

TARGET INFORMATION

Gene ID	58525
Gene Symbol	WIZ
Uniprot ID	WIZ_HUMAN
Immunogen	
Immunogen Region	Internal
Specificity	
Immunogen Sequence	RSYIQGGRPFTKKFR



STJ71806 (1µg/ml) staining of Human Cerebellum lysate (A) + Blocking peptide (B) (35µg protein in RIPA buffer). Detected by chemiluminescence.



STJ71806 Flow cytometric analysis of paraformaldehyde fixed HeLa cells (blue line) ; permeabilized with 0.5% Triton. Primary incubation 1hr (10µg/ml) followed by Alexa Fluor 488 secondary antibody (1µg/ml). IgG control: Unimmunized goat IgG (black line) followed by Alexa Fluor 488 secondary antibody.

This product is suitable for in-vitro studies under the RESEARCH USE ONLY [RUO] licence. This product must not be used as for diagnostic or other medical purposes.
St John's Laboratory Ltd, Knowledge Dock Business Centre, University Way, London, E16 2RD | Tel: 0208 223 3081