

Anti-SH2D4A antibody (Internal) (STJ71789)

STJ71789

GENERAL INFORMATION

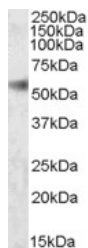
Product Type	Primary antibodies
Short Description	Goat polyclonal antibody anti-SH2D4A (Internal) is suitable for use in ELISA and Immunohistochemistry research applications.
Applications	Pep-ELISA, IHC
Host/Source	Goat
Reactivity	Human, Dog

PRODUCT PROPERTIES

Clonality	Polyclonal
Clone ID	
Concentration	0.5 mg/mL
Conjugation	Unconjugated
Purification	Purified from goat serum by ammonium sulphate precipitation followed by antigen affinity chromatography using the immunizing peptide.
Dilution Range	WB-0.1-0.3µg/ml ELISA-antibody detection limit dilution 1:1000.
Formulation	0.5 mg/ml in Tris saline, 0.02% sodium azide, pH7.3 with 0.5% bovine serum albumin.
Isotype	IgG
Storage Instruction	Store at -20 on receipt and minimise freeze-thaw cycles.

TARGET INFORMATION

Gene ID	63898
Gene Symbol	SH2D4A
Uniprot ID	SH24A_HUMAN
Immunogen	
Immunogen Region	Internal
Specificity	
Immunogen Sequence	HQKESMKKKQDE



STJ71789 (0.1µg/ml) staining of Human Kidney lysate (35µg protein in RIPA buffer). Primary incubation was 1 hour. Detected by chemiluminescence.

This product is suitable for in-vitro studies under the RESEARCH USE ONLY [RUO] licence. This product must not be used as for diagnostic or other medical purposes.
St John's Laboratory Ltd, Knowledge Dock Business Centre, University Way, London, E16 2RD | Tel: 0208 223 3081