

Anti-DIAPH1 antibody (Internal) (STJ71749)

STJ71749

GENERAL INFORMATION

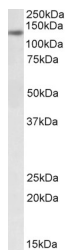
Product Type	Primary antibodies
Short Description	Goat polyclonal antibody anti-DIAPH1 (Internal) is suitable for use in ELISA and Flow Cytometry research applications.
Applications	Pep-ELISA, FC
Host/Source	Goat
Reactivity	Human, Mouse

PRODUCT PROPERTIES

Clonality	Polyclonal
Clone ID	
Concentration	0.5 mg/mL
Conjugation	Unconjugated
Purification	Purified from goat serum by ammonium sulphate precipitation followed by antigen affinity chromatography using the immunizing peptide.
Dilution Range	WB-0.3-1µg/ml ELISA-antibody detection limit dilution 1:32000.
Formulation	0.5 mg/ml in Tris saline, 0.02% sodium azide, pH7.3 with 0.5% bovine serum albumin.
Isotype	IgG
Storage Instruction	Store at-20 on receipt and minimise freeze-thaw cycles.

TARGET INFORMATION

Gene ID	1729
Gene Symbol	DIAPH1
Uniprot ID	DIAP1_HUMAN
Immunogen	
Immunogen Region	Internal
Specificity	This antibody is expected to recognize both reported isoforms (NP_005210.3; NP_001073280.1).
Immunogen Sequence	QTKTSKAKKDQ



STJ71749 (0.3µg/ml) staining of NIH3T3 lysate (35µg protein in RIPA buffer). Primary incubation was 1 hour. Detected by chemiluminescence.

This product is suitable for in-vitro studies under the RESEARCH USE ONLY [RUO] licence. This product must not be used as for diagnostic or other medical purposes.
St John's Laboratory Ltd, Knowledge Dock Business Centre, University Way, London, E16 2RD | Tel: 0208 223 3081