

Anti-SEPT6 antibody (Internal) (STJ71734)

STJ71734

GENERAL INFORMATION

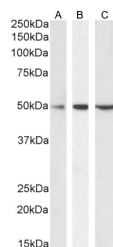
Product Type	Primary antibodies
Short Description	Goat polyclonal antibody anti-SEPT6 (Internal) is suitable for use in ELISA, Western Blot and Immunoprecipitation research applications.
Applications	Pep-ELISA, WB, IP
Host/Source	Goat
Reactivity	Human, Cow, Dog

PRODUCT PROPERTIES

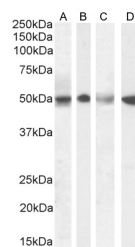
Clonality	Polyclonal
Clone ID	
Concentration	0.5 mg/mL
Conjugation	Unconjugated
Purification	Purified from goat serum by ammonium sulphate precipitation followed by antigen affinity chromatography using the immunizing peptide.
Dilution Range	WB-0.03-1µg/ml IHC-Recommended concentration, 3-5µg/ml ELISA-antibody detection limit dilution 1:4000.
Formulation	0.5 mg/ml in Tris saline, 0.02% sodium azide, pH7.3 with 0.5% bovine serum albumin.
Isotype	IgG
Storage Instruction	Store at -20 on receipt and minimise freeze-thaw cycles.

TARGET INFORMATION

Gene ID	23157
Gene Symbol	SEPTIN6
Uniprot ID	SEPT6_HUMAN
Immunogen	Internal
Region	
Specificity	This antibody is expected to recognize the reported isoforms NP_665798.1, NP_055944.2 and NP_665801.1. Reported variants NP_665799.1 and NP_665798.1 represent identical protein.
Immunogen Sequence	DEVNAFKQRKTA



STJ71734 (0.1µg/ml) staining of Daudi (A), Jurkat (B) and MOLT4 (C) cell lysate (35µg protein in RIPA buffer). Detected by chemiluminescence.



STJ71734 (1µg/ml) staining of Human Testis (A), (0.1µg/ml) Duodenum (B), (0.5µg/ml) Kidney (C) and (0.3µg/ml) Tonsil (D) lysate (35µg protein in RIPA buffer). Detected by chemiluminescence.

This product is suitable for in-vitro studies under the RESEARCH USE ONLY [RUO] licence. This product must not be used as for diagnostic or other medical purposes.
St John's Laboratory Ltd, Knowledge Dock Business Centre, University Way, London, E16 2RD | Tel: 0208 223 3081