

## Anti-BIN1 antibody (Internal) (STJ71638)

STJ71638

### GENERAL INFORMATION

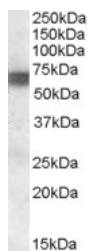
<b>Product Type</b>	Primary antibodies
<b>Short Description</b>	Goat polyclonal antibody anti-BIN1 (Internal) is suitable for use in ELISA research applications.
<b>Applications</b>	Pep-ELISA
<b>Host/Source</b>	Goat
<b>Reactivity</b>	Human, Mouse, Rat, Dog, Pig, Cow

### PRODUCT PROPERTIES

<b>Clonality</b>	Polyclonal
<b>Clone ID</b>	
<b>Concentration</b>	0.5 mg/mL
<b>Conjugation</b>	Unconjugated
<b>Purification</b>	Purified from goat serum by ammonium sulphate precipitation followed by antigen affinity chromatography using the immunizing peptide.
<b>Dilution Range</b>	ELISA-antibody detection limit dilution 1:1000.
<b>Formulation</b>	0.5 mg/ml in Tris saline, 0.02% sodium azide, pH7.3 with 0.5% bovine serum albumin.
<b>Isotype</b>	IgG
<b>Storage Instruction</b>	Store at -20 on receipt and minimise freeze-thaw cycles.

### TARGET INFORMATION

<b>Gene ID</b>	274
<b>Gene Symbol</b>	BIN1
<b>Uniprot ID</b>	BIN1_HUMAN
<b>Immunogen Region</b>	Internal
<b>Specificity</b>	This antibody is expected to recognise all ten reported isoforms (NP_647593.1, NP_647594.1, NP_647595.1, NP_647596.1, NP_647597.1, NP_647598.1, NP_647599.1, NP_004296.1, NP_647600.1, NP_647601.1).
<b>Immunogen Sequence</b>	SDNAPAKGNKSPS



STJ71638 (0.1 µg/ml) staining of Human Skeletal Muscle lysate (5µg protein in RIPA buffer). Primary incubation was 1 hour. Detected by chemiluminescence