

Anti-FGFR2 antibody (Internal) (STJ71519)

STJ71519

GENERAL INFORMATION

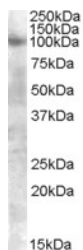
Product Type	Primary antibodies
Short Description	Goat polyclonal antibody anti-FGFR2 (Internal) is suitable for use in ELISA research applications.
Applications	Pep-ELISA
Host/Source	Goat
Reactivity	Human, Mouse, Rat, Dog, Pig, Cow

PRODUCT PROPERTIES

Clonality	Polyclonal
Clone ID	
Concentration	0.5 mg/mL
Conjugation	Unconjugated
Purification	Purified from goat serum by ammonium sulphate precipitation followed by antigen affinity chromatography using the immunizing peptide.
Dilution Range	WB-0.3-1µg/ml ELISA-antibody detection limit dilution 1:64000.
Formulation	0.5 mg/ml in Tris saline, 0.02% sodium azide, pH7.3 with 0.5% bovine serum albumin.
Isotype	IgG
Storage Instruction	Store at -20 on receipt and minimise freeze-thaw cycles.

TARGET INFORMATION

Gene ID	2263
Gene Symbol	FGFR2
Uniprot ID	FGFR2_HUMAN
Immunogen	Internal
Immunogen Region	
Specificity	This antibody is expected to recognise all reported isoforms except isoform 7 (NP_001138389.1). The immunizing peptide represents part of the extracellular domain.
Immunogen Sequence	GREKEITASPDY



STJ71519 (0.3µg/ml) staining of A549 lysate (35µg protein in RIPA buffer). Primary incubation was 1 hour. Detected by chemiluminescence.