

Anti-NOVA1 antibody (Internal) (STJ71492)

STJ71492

GENERAL INFORMATION

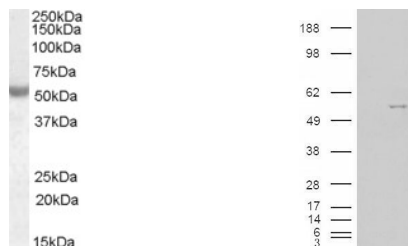
Product Type	Primary antibodies
Short Description	Goat polyclonal antibody anti-NOVA1 (Internal) is suitable for use in ELISA and Western Blot research applications.
Applications	Pep-ELISA, WB
Host/Source	Goat
Reactivity	Human

PRODUCT PROPERTIES

Clonality	Polyclonal
Clone ID	
Concentration	0.5 mg/mL
Conjugation	Unconjugated
Purification	Purified from goat serum by ammonium sulphate precipitation followed by antigen affinity chromatography using the immunizing peptide.
Dilution Range	IHC-5µg/ml ELISA-antibody detection limit dilution 1:64000.
Formulation	0.5 mg/ml in Tris saline, 0.02% sodium azide, pH7.3 with 0.5% bovine serum albumin.
Isotype	IgG
Storage Instruction	Store at -20 on receipt and minimise freeze-thaw cycles.

TARGET INFORMATION

Gene ID	4857
Gene Symbol	NOVA1
Uniprot ID	NOVA1_HUMAN
Immunogen	
Immunogen Region	Internal
Specificity	This antibody is expected to recognise all three reported isoforms (NP_002506.2 ; NP_006480.2 ; NP_006482.1)
Immunogen Sequence	REMPQNVAKTEPVS



STJ71492 (0.01µg/ml) staining of Human Breast Cancer lysate (35µg protein in RIPA buffer). Detected by chemiluminescence.

HEK293 overexpressing NOVA1 (RC210407) and probed with STJ71492 (mock transfection in first lane), tested by Origene.

This product is suitable for in-vitro studies under the RESEARCH USE ONLY [RUO] licence. This product must not be used as for diagnostic or other medical purposes.
St John's Laboratory Ltd, Knowledge Dock Business Centre, University Way, London, E16 2RD | Tel: 0208 223 3081