

Anti-CEP290/NPHP6 antibody (Internal) (STJ71490)

STJ71490

GENERAL INFORMATION

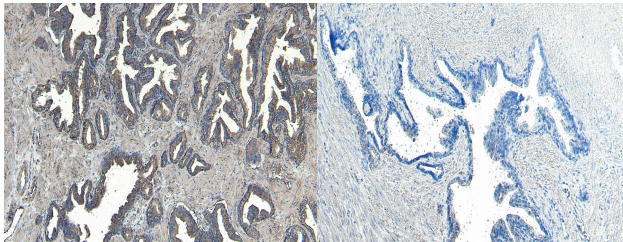
Product Type	Primary antibodies
Short Description	Goat polyclonal antibody anti-CEP290/NPHP6 (Internal) is suitable for use in ELISA and Western Blot research applications.
Applications	Pep-ELISA, WB
Host/Source	Goat
Reactivity	Human

PRODUCT PROPERTIES

Clonality	Polyclonal
Clone ID	
Concentration	0.5 mg/mL
Conjugation	Unconjugated
Purification	Purified from goat serum by ammonium sulphate precipitation followed by antigen affinity chromatography using the immunizing peptide.
Dilution Range	IHC-4-8µg/ml IF-Strong expression of the protein seen within the centrosome of HeLa cells. 10µg/ml ELISA-antibody detection limit dilution 1:8000.
Formulation	0.5 mg/ml in Tris saline, 0.02% sodium azide, pH7.3 with 0.5% bovine serum albumin.
Isotype	IgG
Storage Instruction	Store at-20 on receipt and minimise freeze-thaw cycles.

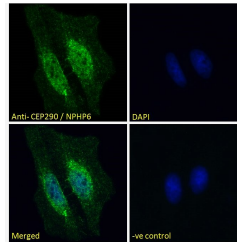
TARGET INFORMATION

Gene ID	80184
Gene Symbol	CEP290
Uniprot ID	CE290_HUMAN
Immunogen	
Immunogen Region	Internal
Specificity	
Immunogen Sequence	QSGAESTIPDADQ



STJ71490 (8µg/ml) staining of paraffin embedded Human Prostate. Heat induced antigen retrieval with citrate buffer pH 6, HRP-staining.

STJ71490 Negative Control showing staining of paraffin embedded Human Prostate, with no primary antibody.



STJ71490 Immunofluorescence analysis of paraformaldehyde fixed HeLa cells, permeabilized with 0.15% Triton. Primary incubation 1hr (10µg/ml) followed by Alexa Fluor 488 secondary antibody (2µg/ml) showing nuclear and centrosome staining. The nuclear stain is DAPI (blue). Negative control: Unimmunized goat IgG (10µg/ml) followed by Alexa Fluor 488 secondary antibody (2µg/ml).