

Anti-EBPL41L5 antibody (Internal) (STJ71406)

STJ71406

GENERAL INFORMATION

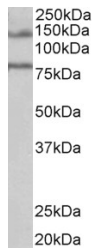
| | |
|--------------------------|--|
| Product Type | Primary antibodies |
| Short Description | Goat polyclonal antibody anti-EBPL41L5 (Internal) is suitable for use in ELISA, Western Blot and Immunohistochemistry research applications. |
| Applications | Pep-ELISA, WB, IHC |
| Host/Source | Goat |
| Reactivity | Human |

PRODUCT PROPERTIES

| | |
|----------------------------|---|
| Clonality | Polyclonal |
| Clone ID | |
| Concentration | 0.5 mg/mL |
| Conjugation | Unconjugated |
| Purification | Purified from goat serum by ammonium sulphate precipitation followed by antigen affinity chromatography using the immunizing peptide. |
| Dilution Range | WB-1-3µg/ml ELISA-antibody detection limit dilution 1:8000. |
| Formulation | 0.5 mg/ml in Tris saline, 0.02% sodium azide, pH7.3 with 0.5% bovine serum albumin. |
| Isotype | IgG |
| Storage Instruction | Store at -20 on receipt and minimise freeze-thaw cycles. |

TARGET INFORMATION

| | |
|---------------------------|---------------|
| Gene ID | 57669 |
| Gene Symbol | EPB41L5 |
| Uniprot ID | E41L5_HUMAN |
| Immunogen | |
| Immunogen Region | Internal |
| Specificity | |
| Immunogen Sequence | ENLPQSPGTDQHD |



STJ71406 (1µg/ml) staining of Human Brain (Hippocampus) lysate (35µg protein in RIPA buffer). Primary incubation was 1 hour. Detected by chemiluminescence.