

Anti-TPD52L1/D53 antibody (Internal) (STJ71302)

STJ71302

GENERAL INFORMATION

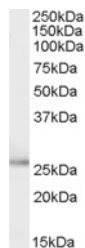
Product Type	Primary antibodies
Short Description	Goat polyclonal antibody anti-TPD52L1/D53 (Internal) is suitable for use in ELISA, Western Blot, Immunofluorescence and Flow Cytometry research applications.
Applications	Pep-ELISA, WB, IF, FC
Host/Source	Goat
Reactivity	Human

PRODUCT PROPERTIES

Clonality	Polyclonal
Clone ID	
Concentration	0.5 mg/mL
Conjugation	Unconjugated
Purification	Purified from goat serum by ammonium sulphate precipitation followed by antigen affinity chromatography using the immunizing peptide.
Dilution Range	WB-0.1-0.3µg/ml ELISA-antibody detection limit dilution 1:8000.
Formulation	0.5 mg/ml in Tris saline, 0.02% sodium azide, pH7.3 with 0.5% bovine serum albumin.
Isotype	IgG
Storage Instruction	Store at -20 on receipt and minimise freeze-thaw cycles.

TARGET INFORMATION

Gene ID	7164
Gene Symbol	TPD52L1
Uniprot ID	TPD53_HUMAN
Immunogen	Internal
Region	
Specificity	This antibody is expected to recognise isoforms 1, 3 and 4 (NP_003278.1, NP_001003396.1 and NP_001003397.1 resp.).
Immunogen Sequence	EPLQGTDEDAVASAD



STJ71302 (0.1µg/ml) staining of Human Breast cancer lysate (65µg protein in RIPA buffer). Primary incubation was 1 hour. Detected by chemiluminescence.