

## Anti-Thrb antibody (Internal) (STJ71268)

STJ71268

### GENERAL INFORMATION

<b>Product Type</b>	Primary antibodies
<b>Short Description</b>	Goat polyclonal antibody anti-Thrb (Internal) is suitable for use in ELISA, Immunofluorescence and Flow Cytometry research applications.
<b>Applications</b>	Pep-ELISA, IF, FC
<b>Host/Source</b>	Goat
<b>Reactivity</b>	Zebrafish

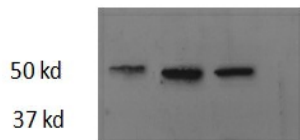
### PRODUCT PROPERTIES

<b>Clonality</b>	Polyclonal
<b>Clone ID</b>	
<b>Concentration</b>	0.5 mg/mL
<b>Conjugation</b>	Unconjugated
<b>Purification</b>	Purified from goat serum by ammonium sulphate precipitation followed by antigen affinity chromatography using the immunizing peptide.
<b>Dilution Range</b>	WB-2-5µg/ml ELISA-antibody detection limit dilution 1:32000.
<b>Formulation</b>	0.5 mg/ml in Tris saline, 0.02% sodium azide, pH7.3 with 0.5% bovine serum albumin.
<b>Isotype</b>	IgG
<b>Storage Instruction</b>	Store at -20 on receipt and minimise freeze-thaw cycles.

### TARGET INFORMATION

<b>Gene ID</b>	
<b>Gene Symbol</b>	
<b>Uniprot ID</b>	
<b>Immunogen</b>	
<b>Immunogen Region</b>	Internal
<b>Specificity</b>	This antibody is not expected to cross-react to Thra.
<b>Immunogen Sequence</b>	DIGSAPIVNAPEGNKVD

### Adult hearts samples



STJ71268 (2.5 µg/ml) staining of Zebrafish adult Heart lysate (35 µg protein in RIPA buffer). Primary incubation was 1 hour. Detected by chemiluminescence.