

Anti-Tcfec-Mouse antibody (Internal) (STJ71245)

STJ71245

GENERAL INFORMATION

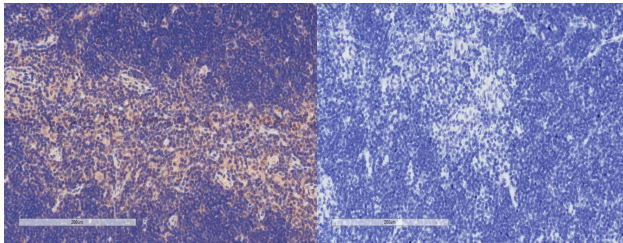
Product Type	Primary antibodies
Short Description	Goat polyclonal antibody anti-Tcfec-Mouse (Internal) is suitable for use in ELISA, Western Blot and Immunohistochemistry research applications.
Applications	Pep-ELISA, WB, IHC
Host/Source	Goat
Reactivity	Mouse, Rat

PRODUCT PROPERTIES

Clonality	Polyclonal
Clone ID	
Concentration	0.5 mg/mL
Conjugation	Unconjugated
Purification	Purified from goat serum by ammonium sulphate precipitation followed by antigen affinity chromatography using the immunizing peptide.
Dilution Range	IHC-4-6µg/ml, 5µg/ml ELISA-antibody detection limit dilution 1:32000.
Formulation	0.5 mg/ml in Tris saline, 0.02% sodium azide, pH7.3 with 0.5% bovine serum albumin.
Isotype	IgG
Storage Instruction	Store at -20 on receipt and minimise freeze-thaw cycles.

TARGET INFORMATION

Gene ID	
Gene Symbol	
Uniprot ID	
Immunogen	
Immunogen Region	Internal
Specificity	
Immunogen Sequence	HITKQQTHPERN



STJ71245 (4µg/ml) staining of paraffin embedded Mouse Thymus. Microwaved antigen retrieval with citrate buffer pH 6, HRP-staining.

STJ71245 Negative Control showing staining of paraffin embedded Mouse Thymus, with no primary antibody.

This product is suitable for in-vitro studies under the RESEARCH USE ONLY [RUO] licence. This product must not be used as for diagnostic or other medical purposes.
St John's Laboratory Ltd, Knowledge Dock Business Centre, University Way, London, E16 2RD | Tel: 0208 223 3081