

Anti-TFEB antibody (Internal) (STJ71244)

STJ71244

GENERAL INFORMATION

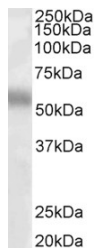
Product Type	Primary antibodies
Short Description	Goat polyclonal antibody anti-TFEB (Internal) is suitable for use in ELISA, Western Blot and Immunohistochemistry research applications.
Applications	Pep-ELISA, WB, IHC
Host/Source	Goat
Reactivity	Human, Mouse, Rat, Dog

PRODUCT PROPERTIES

Clonality	Polyclonal
Clone ID	
Concentration	0.5 mg/mL
Conjugation	Unconjugated
Purification	Purified from goat serum by ammonium sulphate precipitation followed by antigen affinity chromatography using the immunizing peptide.
Dilution Range	WB-1-3µg/ml ELISA-antibody detection limit dilution 1:1000.
Formulation	0.5 mg/ml in Tris saline, 0.02% sodium azide, pH7.3 with 0.5% bovine serum albumin.
Isotype	IgG
Storage Instruction	Store at -20 on receipt and minimise freeze-thaw cycles.

TARGET INFORMATION

Gene ID	7942
Gene Symbol	TFEB
Uniprot ID	TFEB_HUMAN
Immunogen	
Immunogen Region	Internal
Specificity	This antibody is expected not to cross-react to TFE3 and MITF.
Immunogen Sequence	QKDLQKSRELENH



STJ71244 (1µg/ml) staining of Human Lung lysate (35µg protein in RIPA buffer). Primary incubation was 1 hour. Detected by chemiluminescence.