

## Anti-Insulysin/Insulinase antibody (Internal) (STJ71230)

STJ71230

### GENERAL INFORMATION

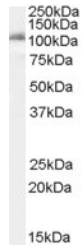
<b>Product Type</b>	Primary antibodies
<b>Short Description</b>	Goat polyclonal antibody anti-Insulysin/Insulinase (Internal) is suitable for use in ELISA and Western Blot research applications.
<b>Applications</b>	Pep-ELISA, WB
<b>Host/Source</b>	Goat
<b>Reactivity</b>	Human, Dog

### PRODUCT PROPERTIES

<b>Clonality</b>	Polyclonal
<b>Clone ID</b>	
<b>Concentration</b>	0.5 mg/mL
<b>Conjugation</b>	Unconjugated
<b>Purification</b>	Purified from goat serum by ammonium sulphate precipitation followed by antigen affinity chromatography using the immunizing peptide.
<b>Dilution Range</b>	WB-0.1-0.3µg/ml IHC-2.5µg/ml ELISA-antibody detection limit dilution 1:32000.
<b>Formulation</b>	0.5 mg/ml in Tris saline, 0.02% sodium azide, pH7.3 with 0.5% bovine serum albumin.
<b>Isotype</b>	IgG
<b>Storage Instruction</b>	Store at -20 on receipt and minimise freeze-thaw cycles.

### TARGET INFORMATION

<b>Gene ID</b>	3416
<b>Gene Symbol</b>	IDE
<b>Uniprot ID</b>	IDE_HUMAN
<b>Immunogen Region</b>	Internal
<b>Specificity</b>	This antibody is expected to recognize all reported isoforms (NP_004960.2; NP_001159418.1; NP_001309722.1; NP_001309723.1; NP_001309724.1; NP_001309726.1). Reported variants represent identical protein: NP_001309725.1, NP_001309724.1
<b>Immunogen Sequence</b>	QQYNFDRDNT



STJ71230 (0.1µg/ml) staining of K562 cell lysate (35µg protein in RIPA buffer). Detected by chemiluminescence.

This product is suitable for in-vitro studies under the RESEARCH USE ONLY [RUO] licence. This product must not be used as for diagnostic or other medical purposes.  
St John's Laboratory Ltd, Knowledge Dock Business Centre, University Way, London, E16 2RD | Tel: 0208 223 3081