

Anti-ribosomal protein L8 antibody (Internal) (STJ71217)

STJ71217

GENERAL INFORMATION

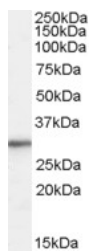
Product Type	Primary antibodies
Short Description	Goat polyclonal antibody anti-ribosomal protein L8 (Internal) is suitable for use in ELISA, Western Blot and Flow Cytometry research applications.
Applications	Pep-ELISA, WB, FC
Host/Source	Goat
Reactivity	Human, Mouse, Rat, Dog

PRODUCT PROPERTIES

Clonality	Polyclonal
Clone ID	
Concentration	0.5 mg/mL
Conjugation	Unconjugated
Purification	Purified from goat serum by ammonium sulphate precipitation followed by antigen affinity chromatography using the immunizing peptide.
Dilution Range	WB-0.01-0.03µg/ml IHC-2.5µg/ml ELISA-antibody detection limit dilution 1:128000.
Formulation	0.5 mg/ml in Tris saline, 0.02% sodium azide, pH7.3 with 0.5% bovine serum albumin.
Isotype	IgG
Storage Instruction	Store at -20 on receipt and minimise freeze-thaw cycles.

TARGET INFORMATION

Gene ID	6132
Gene Symbol	RPL8
Uniprot ID	RL8_HUMAN
Immunogen	
Immunogen Region	Internal
Specificity	The reported variants represent identical protein (NP_000964.1 and NP_150644.1).
Immunogen Sequence	KAGRAYHKYKAKRNC



STJ71217 (0.01µg/ml) staining of HepG2 cell lysate (35µg protein in RIPA buffer). Detected by chemiluminescence.