

Anti-MIC1/C18orf8 antibody (Internal) (STJ71181)

STJ71181

GENERAL INFORMATION

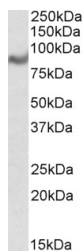
Product Type	Primary antibodies
Short Description	Goat polyclonal antibody anti-MIC1/C18orf8 (Internal) is suitable for use in ELISA, Western Blot, Immunohistochemistry and Flow Cytometry research applications.
Applications	Pep-ELISA, WB, IHC, FC
Host/Source	Goat
Reactivity	Human, Mouse, Rat, Dog

PRODUCT PROPERTIES

Clonality	Polyclonal
Clone ID	
Concentration	0.5 mg/mL
Conjugation	Unconjugated
Purification	Purified from goat serum by ammonium sulphate precipitation followed by antigen affinity chromatography using the immunizing peptide.
Dilution Range	WB-1-3µg/ml IHC-Recommended concentration, 5-2=10µg/ml ELISA-antibody detection limit dilution 1:32000.
Formulation	0.5 mg/ml in Tris saline, 0.02% sodium azide, pH7.3 with 0.5% bovine serum albumin.
Isotype	IgG
Storage Instruction	Store at -20 on receipt and minimise freeze-thaw cycles.

TARGET INFORMATION

Gene ID	29919
Gene Symbol	RMC1
Uniprot ID	RMC1_HUMAN
Immunogen	
Immunogen Region	Internal
Specificity	
Immunogen Sequence	DKLNHEYKKYLDAEQ



STJ71181 (1µg/ml) staining of Human Breast lysate (35µg protein in RIPA buffer). Primary incubation was 1 hour. Detected by chemiluminescence.