

Anti-KCNJ11/KATP/ antibody (Internal) (STJ71166)

STJ71166

GENERAL INFORMATION

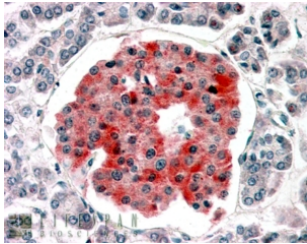
Product Type	Primary antibodies
Short Description	Goat polyclonal antibody anti-KCNJ11/KATP/ (Internal) is suitable for use in ELISA and Immunofluorescence research applications.
Applications	Pep-ELISA, IF
Host/Source	Goat
Reactivity	Human

PRODUCT PROPERTIES

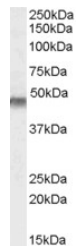
Clonality	Polyclonal
Clone ID	
Concentration	0.5 mg/mL
Conjugation	Unconjugated
Purification	Purified from goat serum by ammonium sulphate precipitation followed by antigen affinity chromatography using the immunizing peptide.
Dilution Range	WB-0.1-0.3µg/ml IHC-Recommended concentration, 3-5µg/ml ELISA-antibody detection limit dilution 1:32000.
Formulation	0.5 mg/ml in Tris saline, 0.02% sodium azide, pH7.3 with 0.5% bovine serum albumin.
Isotype	IgG
Storage Instruction	Store at -20 on receipt and minimise freeze-thaw cycles.

TARGET INFORMATION

Gene ID	3767
Gene Symbol	KCNJ11
Uniprot ID	KCJ11_HUMAN
Immunogen	
Immunogen Region	Internal
Specificity	This antibody is expected to recognise isoform 1 (NP_000516.3) only.
Immunogen Sequence	AEDPAKPRYRARQ



STJ71166 (3.8µg/ml) staining of paraffin embedded Human Pancreas. Steamed antigen retrieval with citrate buffer pH 6, AP-staining.



STJ71166 (0.1µg/ml) staining of Human Muscle lysate (35µg protein in RIPA buffer). Primary incubation was 1 hour. Detected by chemiluminescence.