

Anti-Argininosuccinate synthetase 1 antibody (Internal) (STJ71128)

STJ71128

GENERAL INFORMATION

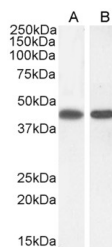
| | |
|--------------------------|--|
| Product Type | Primary antibodies |
| Short Description | Goat polyclonal antibody anti-Argininosuccinate synthetase 1 (Internal) is suitable for use in ELISA, Western Blot, Immunofluorescence and Immunohistochemistry research applications. |
| Applications | Pep-ELISA, WB, IF, IHC |
| Host/Source | Goat |
| Reactivity | Human, Mouse, Rat, Dog, Cow |

PRODUCT PROPERTIES

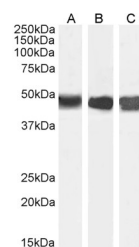
| | |
|-----------------------|--|
| Clonality | Polyclonal |
| Clone ID | |
| Concentration | 0.5 mg/mL |
| Conjugation | Unconjugated |
| Purification | Purified from goat serum by ammonium sulphate precipitation followed by antigen affinity chromatography using the immunizing peptide. |
| Dilution Range | IHC-2-4µg/ml, 2.5µg/ml IF-Strong expression of the protein seen in the cytoplasm of HeLa cells. 10µg/ml FC-Flow cytometric analysis of A431 cells. 10µg/ml ELISA-antibody detection limit dilution 1:64000. |
| Formulation | 0.5 mg/ml in Tris saline, 0.02% sodium azide, pH7.3 with 0.5% bovine serum albumin. |
| Isotype | IgG |
| Storage | Store at -20 on receipt and minimise freeze-thaw cycles. |
| Instruction | |

TARGET INFORMATION

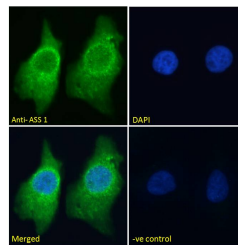
| | |
|---------------------------|---|
| Gene ID | 445 |
| Gene Symbol | ASS1 |
| Uniprot ID | ASSY_HUMAN |
| Immunogen | |
| Immunogen Region | Internal |
| Specificity | The variants represent identical protein (NP_000041.2 and NP_446464.1). |
| Immunogen Sequence | ENPKNQAPPGLYTKTQD |



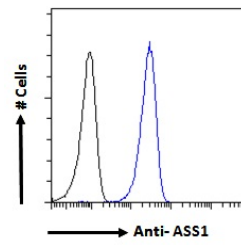
STJ71128 (0.3µg/ml) staining of A431 (A) and (1µg/ml) NIH3T3 (B) cell lysate (35µg protein in RIPA buffer). Detected by chemiluminescence.



STJ71128 (0.01µg/ml) staining of Human Kidney (A) Mouse Liver (B) and (0.03µg/ml) Rat Kidney (C) lysate (35µg protein in RIPA buffer). Detected by chemiluminescence.



STJ71128 Immunofluorescence analysis of paraformaldehyde fixed HeLa cells, permeabilized with 0.15% Triton. Primary incubation 1hr (10µg/ml) followed by Alexa Fluor 488 secondary antibody (2µg/ml) showing cytoplasmic staining. The nuclear stain is DAPI (blue). Negative control: Unimmunized goat IgG (10µg/ml) followed by Alexa Fluor 488 secondary antibody (2µg/ml).



STJ71128 Flow cytometric analysis of paraformaldehyde fixed A431 cells (blue line) permeabilized with 0.5% Triton. Primary incubation 1hr (10µg/ml) followed by Alexa Fluor 488 secondary antibody (1µg/ml). IgG control: Unimmunized goat IgG (black line) followed by Alexa Fluor 488 secondary antibody.

This product is suitable for in-vitro studies under the RESEARCH USE ONLY [RUO] licence. This product must not be used as for diagnostic or other medical purposes.

St John's Laboratory Ltd, Knowledge Dock Business Centre, University Way, London, E16 2RD | Tel: 0208 223 3081