

## Anti-Npy2r-Mouse antibody (Internal) (STJ71106)

STJ71106

### GENERAL INFORMATION

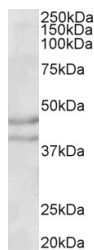
<b>Product Type</b>	Primary antibodies
<b>Short Description</b>	Goat polyclonal antibody anti-Npy2r-Mouse (Internal) is suitable for use in ELISA and Western Blot research applications.
<b>Applications</b>	Pep-ELISA, WB
<b>Host/Source</b>	Goat
<b>Reactivity</b>	Human, Mouse, Rat, Dog

### PRODUCT PROPERTIES

<b>Clonality</b>	Polyclonal
<b>Clone ID</b>	
<b>Concentration</b>	0.5 mg/mL
<b>Conjugation</b>	Unconjugated
<b>Purification</b>	Purified from goat serum by ammonium sulphate precipitation followed by antigen affinity chromatography using the immunizing peptide.
<b>Dilution Range</b>	WB-0.1-0.3µg/ml ELISA-antibody detection limit dilution 1:4000.
<b>Formulation</b>	0.5 mg/ml in Tris saline, 0.02% sodium azide, pH7.3 with 0.5% bovine serum albumin.
<b>Isotype</b>	IgG
<b>Storage</b>	Store at -20 on receipt and minimise freeze-thaw cycles.
<b>Instruction</b>	

### TARGET INFORMATION

<b>Gene ID</b>	4887
<b>Gene Symbol</b>	NPY2R
<b>Uniprot ID</b>	NPY2R_HUMAN
<b>Immunogen</b>	
<b>Region</b>	Internal
<b>Specificity</b>	Please note this antibody was designed using the Mouse sequence NP_032757.1, which differs by 1 amino acid from the Human sequence NP_000901.1.
<b>Immunogen Sequence</b>	KAKKNLEVKKNN



STJ71106 (0.1 µg/ml) staining of Rat Brain lysate (35 µg protein in RIPA buffer). Primary incubation was 1 hour. Detected by chemiluminescence.