

Anti-APPL1 antibody (Internal) (STJ71081)

STJ71081

GENERAL INFORMATION

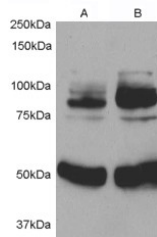
Product Type	Primary antibodies
Short Description	Goat polyclonal antibody anti-APPL1 (Internal) is suitable for use in ELISA, Immunofluorescence and Flow Cytometry research applications.
Applications	Pep-ELISA, IF, FC
Host/Source	Goat
Reactivity	Human, Mouse, Rat, Dog, Cow

PRODUCT PROPERTIES

Clonality	Polyclonal
Clone ID	
Concentration	0.5 mg/mL
Conjugation	Unconjugated
Purification	Purified from goat serum by ammonium sulphate precipitation followed by antigen affinity chromatography using the immunizing peptide.
Dilution Range	ELISA-antibody detection limit dilution 1:64000.
Formulation	0.5 mg/ml in Tris saline, 0.02% sodium azide, pH7.3 with 0.5% bovine serum albumin.
Isotype	IgG
Storage Instruction	Store at -20 on receipt and minimise freeze-thaw cycles.

TARGET INFORMATION

Gene ID	26060
Gene Symbol	APPL1
Uniprot ID	DP13A_HUMAN
Immunogen	
Immunogen Region	Internal
Specificity	
Immunogen Sequence	NRYSRLSKKRENDK



STJ71081 (0.5 µg/ml) staining of 1) Rat Aortic Smooth Muscle cell lysate 2) after infection with Human APPL1 adenovirus for 48hrs. Detected by chemiluminescence. Data kindly provided by Dr. L. Jia, Ann Arbor, USA.

This product is suitable for in-vitro studies under the RESEARCH USE ONLY [RUO] licence. This product must not be used as for diagnostic or other medical purposes.
St John's Laboratory Ltd, Knowledge Dock Business Centre, University Way, London, E16 2RD | Tel: 0208 223 3081