

Anti-ARF1 antibody (C-Term) (STJ71062)

STJ71062

GENERAL INFORMATION

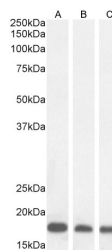
Product Type	Primary antibodies
Short Description	Goat polyclonal antibody anti-ARF1 (C-Term) is suitable for use in ELISA and Immunohistochemistry research applications.
Applications	Pep-ELISA, IHC
Host/Source	Goat
Reactivity	Human, Mouse, Rat, Dog

PRODUCT PROPERTIES

Clonality	Polyclonal
Clone ID	
Concentration	0.5 mg/mL
Conjugation	Unconjugated
Purification	Purified from goat serum by ammonium sulphate precipitation followed by antigen affinity chromatography using the immunizing peptide.
Dilution Range	WB-1-3µg/ml ELISA-antibody detection limit dilution 1:8000.
Formulation	0.5 mg/ml in Tris saline, 0.02% sodium azide, pH7.3 with 0.5% bovine serum albumin.
Isotype	IgG
Storage Instruction	Store at -20 on receipt and minimise freeze-thaw cycles.

TARGET INFORMATION

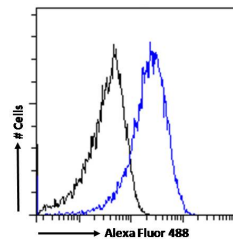
Gene ID	375
Gene Symbol	ARF1
Uniprot ID	ARF1_HUMAN
Immunogen	
Immunogen Region	C-Term
Specificity	This antibody is expected to recognize all four reported isoforms.
Immunogen Sequence	EGLDWLSNQLRNQK



STJ71062 (1µg/ml) staining of A431 (A) and (0.3µg/ml) of HeLa (B) and MCF7 (C) cell lysate (35µg protein in RIPA buffer). Detected by chemiluminescence.



STJ71062 (1µg/ml) staining of NIH3T3 (A), KNRK (B) and MDCK (C) cell lysate (35µg protein in RIPA buffer). Detected by chemiluminescence.



STJ71062 Flow cytometric analysis of paraformaldehyde fixed A431 cells (blue line) permeabilized with 0.5% Triton. Primary incubation 1hr (10µg/ml) followed by Alexa Fluor 488 secondary antibody (1µg/ml). IgG control: Unimmunized goat IgG (black line) followed by Alexa Fluor 488 secondary antibody.

This product is suitable for in-vitro studies under the RESEARCH USE ONLY [RUO] licence. This product must not be used as for diagnostic or other medical purposes.
St John's Laboratory Ltd, Knowledge Dock Business Centre, University Way, London, E16 2RD | Tel: 0208 223 3081