

Anti-CNTFR antibody (Internal) (STJ71057)

STJ71057

GENERAL INFORMATION

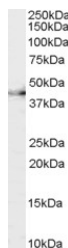
| | |
|--------------------------|---|
| Product Type | Primary antibodies |
| Short Description | Goat polyclonal antibody anti-CNTFR (Internal) is suitable for use in ELISA, Western Blot, Immunoprecipitation, Immunohistochemistry, Immunocytochemistry and Immunofluorescence research applications. |
| Applications | Pep-ELISA, WB, IP, IHC, ICC, IF |
| Host/Source | Goat |
| Reactivity | Human, Mouse, Rat, Dog |

PRODUCT PROPERTIES

| | |
|----------------------------|---|
| Clonality | Polyclonal |
| Clone ID | |
| Concentration | 0.5 mg/mL |
| Conjugation | Unconjugated |
| Purification | Purified from goat serum by ammonium sulphate precipitation followed by antigen affinity chromatography using the immunizing peptide. |
| Dilution Range | WB-0.3-1µg/ml ELISA-antibody detection limit dilution 1:16000. |
| Formulation | 0.5 mg/ml in Tris saline, 0.02% sodium azide, pH7.3 with 0.5% bovine serum albumin. |
| Isotype | IgG |
| Storage Instruction | Store at -20 on receipt and minimise freeze-thaw cycles. |

TARGET INFORMATION

| | |
|---------------------------|---|
| Gene ID | 1271 |
| Gene Symbol | CNTFR |
| Uniprot ID | CNTFR_HUMAN |
| Immunogen Region | Internal |
| Specificity | This antibody is expected to recognise both reported isoforms (NP_671693.1; NP_001833.1). |
| Immunogen Sequence | CRSNTYPKGFY |



STJ71057 (0.3µg/ml) staining of mouse brain lysate (35µg protein in RIPA buffer). Primary incubation was 1 hour. Detected by chemiluminescence.