

Anti-FEZ1/Zygin 1 antibody (Internal) (STJ71041)

STJ71041

GENERAL INFORMATION

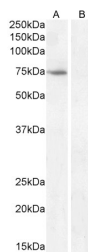
Product Type	Primary antibodies
Short Description	Goat polyclonal antibody anti-FEZ1/Zygin 1 (Internal) is suitable for use in ELISA research applications.
Applications	Pep-ELISA
Host/Source	Goat
Reactivity	Human, Mouse, Rat, Dog

PRODUCT PROPERTIES

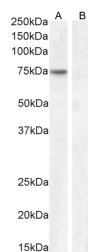
Clonality	Polyclonal
Clone ID	
Concentration	0.5 mg/mL
Conjugation	Unconjugated
Purification	Purified from goat serum by ammonium sulphate precipitation followed by antigen affinity chromatography using the immunizing peptide.
Dilution Range	ELISA-antibody detection limit dilution 1:64000.
Formulation	0.5 mg/ml in Tris saline, 0.02% sodium azide, pH7.3 with 0.5% bovine serum albumin.
Isotype	IgG
Storage Instruction	Store at -20 on receipt and minimise freeze-thaw cycles.

TARGET INFORMATION

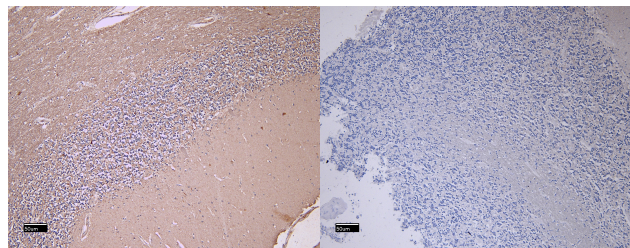
Gene ID	9638
Gene Symbol	FEZ1
Uniprot ID	FEZ1_HUMAN
Immunogen	Internal
Immunogen Region	Internal
Specificity	This antibody is expected to recognize isoform 1 (NP_005094.1) only.
Immunogen Sequence	QNKQKEQRELMKK



STJ71041 (0.1 µg/ml) staining of Kelly cell lysate (A) + Peptide (B) (35 µg protein in RIPA buffer). Detected by chemiluminescence.



STJ71041 (0.1 µg/ml) staining of Rat Brain lysate (A) + Peptide (B) (35 µg protein in RIPA buffer). Detected by chemiluminescence.



STJ71041 (5 µg/ml) staining of paraffin-embedded Human Cerebellum. Heat induced antigen retrieval with citrate buffer pH 6, HRP-staining.

STJ71041 Negative Control showing staining of paraffin-embedded Human Cerebellum, with no primary antibody.

This product is suitable for in-vitro studies under the RESEARCH USE ONLY [RUO] licence. This product must not be used as for diagnostic or other medical purposes.
St John's Laboratory Ltd, Knowledge Dock Business Centre, University Way, London, E16 2RD | Tel: 0208 223 3081