

Anti-Gelsolin/GSN antibody (Internal) (STJ71038)

STJ71038

GENERAL INFORMATION

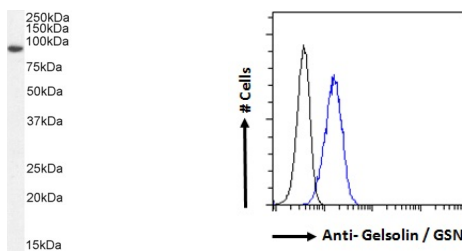
Product Type	Primary antibodies
Short Description	Goat polyclonal antibody anti-Gelsolin/GSN (Internal) is suitable for use in ELISA, Western Blot and Immunohistochemistry research applications.
Applications	Pep-ELISA, WB, IHC
Host/Source	Goat
Reactivity	Human, Mouse, Rat, Dog, Cow

PRODUCT PROPERTIES

Clonality	Polyclonal
Clone ID	
Concentration	0.5 mg/mL
Conjugation	Unconjugated
Purification	Purified from goat serum by ammonium sulphate precipitation followed by antigen affinity chromatography using the immunizing peptide.
Dilution Range	WB-0.1-2µg/ml FC-Flow cytometric analysis of HeLa cells. 10ug/ml ELISA-antibody detection limit dilution 1:128000.
Formulation	0.5 mg/ml in Tris saline, 0.02% sodium azide, pH7.3 with 0.5% bovine serum albumin.
Isotype	IgG
Storage Instruction	Store at -20 on receipt and minimise freeze-thaw cycles.

TARGET INFORMATION

Gene ID	2934
Gene Symbol	GSN
Uniprot ID	GELS_HUMAN
Immunogen	
Immunogen Region	Internal
Specificity	This antibody is expected to recognize isoforms a, b, c, d, e, f, g, h
Immunogen Sequence	PRLKDKKMDAHP



STJ71038 (1µg/ml) staining of Human Colorectal cancer lysate (35µg protein in RIPA buffer). Detected by chemiluminescence.

STJ71038 Flow cytometric analysis of paraformaldehyde fixed HeLa cells (blue line) permeabilized with 0.5% Triton. Primary incubation 1hr (10ug/ml) followed by Alexa Fluor 488 secondary antibody (1ug/ml). IgG control: Unimmunized goat IgG (black line) followed by Alexa Fluor 488 secondary antibody.