

Anti-CYP26B1 antibody (Internal) (STJ71030)

STJ71030

GENERAL INFORMATION

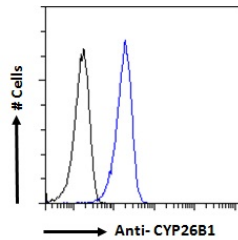
Product Type	Primary antibodies
Short Description	Goat polyclonal antibody anti-CYP26B1 (Internal) is suitable for use in ELISA, Western Blot and Immunohistochemistry research applications.
Applications	Pep-ELISA, WB, IHC
Host/Source	Goat
Reactivity	Human, Mouse, Rat, Dog

PRODUCT PROPERTIES

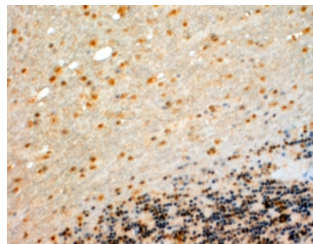
Clonality	Polyclonal
Clone ID	
Concentration	0.5 mg/mL
Conjugation	Unconjugated
Purification	Purified from goat serum by ammonium sulphate precipitation followed by antigen affinity chromatography using the immunizing peptide.
Dilution Range	IHC-4-6µg/ml, 3.75µg/ml FC-Flow cytometric analysis of A431 cells. 10ug/ml ELISA-antibody detection limit dilution 1:128000.
Formulation	0.5 mg/ml in Tris saline, 0.02% sodium azide, pH7.3 with 0.5% bovine serum albumin.
Isotype	IgG
Storage Instruction	Store at -20 on receipt and minimise freeze-thaw cycles.

TARGET INFORMATION

Gene ID	56603
Gene Symbol	CYP26B1
Uniprot ID	CP26B_HUMAN
Immunogen	
Immunogen Region	Internal
Specificity	
Immunogen Sequence	SQARSEDKGRFH



STJ71030 Flow cytometric analysis of paraformaldehyde fixed A431 cells (blue line) permeabilized with 0.5% Triton. Primary incubation 1hr (10ug/ml) followed by Alexa Fluor 488 secondary antibody (1ug/ml). IgG control: Unimmunized goat IgG (black line) followed by Alexa Fluor 488 secondary antibody.



STJ71030 (4µg/ml) staining of paraffin embedded Human Cerebellum. Steamed antigen retrieval with Tris/EDTA buffer pH 9, HRP-staining.