

Anti-Septin 1/SEPT1 antibody (Internal) (STJ70997)

STJ70997

GENERAL INFORMATION

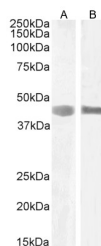
Product Type	Primary antibodies
Short Description	Goat polyclonal antibody anti-Septin 1/SEPT1 (Internal) is suitable for use in ELISA, Western Blot and Immunofluorescence research applications.
Applications	Pep-ELISA, WB, IF
Host/Source	Goat
Reactivity	Human, Mouse, Rat, Dog

PRODUCT PROPERTIES

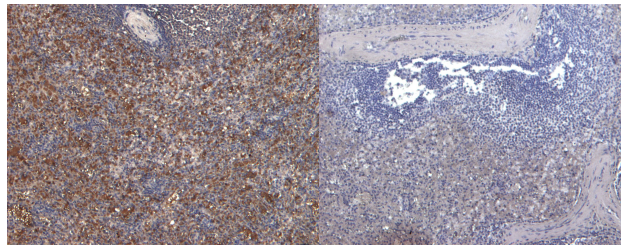
Clonality	Polyclonal
Clone ID	
Concentration	0.5 mg/mL
Conjugation	Unconjugated
Purification	Purified from goat serum by ammonium sulphate precipitation followed by antigen affinity chromatography using the immunizing peptide.
Dilution Range	WB-2-4µg/ml IHC-6-8µg/ml ELISA-antibody detection limit dilution 1:32000.
Formulation	0.5 mg/ml in Tris saline, 0.02% sodium azide, pH7.3 with 0.5% bovine serum albumin.
Isotype	IgG
Storage Instruction	Store at -20 on receipt and minimise freeze-thaw cycles.

TARGET INFORMATION

Gene ID	1731
Gene Symbol	SEPTIN1
Uniprot ID	SEPT1_HUMAN
Immunogen	
Immunogen Region	Internal
Specificity	
Immunogen Sequence	GARDRASRSKLSRQ



STJ70997 (1µg/ml) staining of HEK293 (A) and (2µg/ml) MOLT-4 (B) cell lysate (35µg protein in RIPA buffer). Detected by chemiluminescence



STJ70997 (6µg/ml) staining of paraffin embedded Human Spleen. Heat induced antigen retrieval with citrate buffer pH 6, HRP-staining.

STJ70997 Negative Control showing staining of paraffin embedded Human Spleen, with no primary antibody.