

Anti-COMT antibody (Internal) (STJ70972)

STJ70972

GENERAL INFORMATION

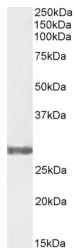
Product Type	Primary antibodies
Short Description	Goat polyclonal antibody anti-COMT (Internal) is suitable for use in ELISA, Western Blot and Immunohistochemistry research applications.
Applications	Pep-ELISA, WB, IHC
Host/Source	Goat
Reactivity	Human

PRODUCT PROPERTIES

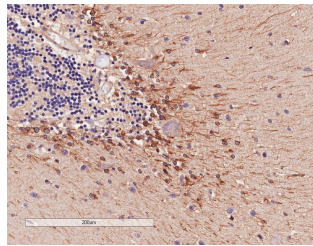
Clonality	Polyclonal
Clone ID	
Concentration	0.5 mg/mL
Conjugation	Unconjugated
Purification	Purified from goat serum by ammonium sulphate precipitation followed by antigen affinity chromatography using the immunizing peptide.
Dilution Range	WB-0.03-0.1µg/ml IHC-2-4µg/ml ELISA-antibody detection limit dilution 1:64000.
Formulation	0.5 mg/ml in Tris saline, 0.02% sodium azide, pH7.3 with 0.5% bovine serum albumin.
Isotype	IgG
Storage Instruction	Store at -20 on receipt and minimise freeze-thaw cycles.

TARGET INFORMATION

Gene ID	1312
Gene Symbol	COMT
Uniprot ID	COMT_HUMAN
Immunogen	
Immunogen Region	Internal
Specificity	This antibody is expected to recognise both reported isoforms (NP_000745.1 and NP_009294.1)
Immunogen Sequence	QDIIPQLKKKYDVD



STJ70972 (0.3µg/ml) staining of Human Testis lysate (35µg protein in RIPA buffer). Primary incubation was 1 hour. Detected by chemiluminescence.



STJ70972 (4µg/ml) staining of paraffin embedded Human Cerebellum. Microwaved antigen retrieval with Tris/EDTA buffer pH9, HRP-staining.

This product is suitable for in-vitro studies under the RESEARCH USE ONLY [RUO] licence. This product must not be used as for diagnostic or other medical purposes.
St John's Laboratory Ltd, Knowledge Dock Business Centre, University Way, London, E16 2RD | Tel: 0208 223 3081