

## Anti-Semaphorin 5A antibody (Internal) (STJ70970)

STJ70970

### GENERAL INFORMATION

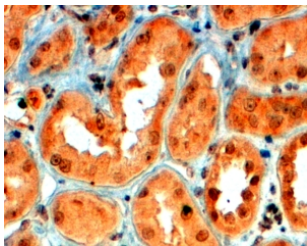
|                          |   |
|--------------------------|---|
| <b>Product Type</b>      | Primary antibodies  |
| <b>Short Description</b> | Goat polyclonal antibody anti-Semaphorin 5A (Internal) is suitable for use in ELISA, Western Blot and Immunohistochemistry research applications. |
| <b>Applications</b>      | Pep-ELISA, WB, IHC  |
| <b>Host/Source</b>       | Goat  |
| <b>Reactivity</b>        | Human, Mouse, Rat, Dog, Cow   |

### PRODUCT PROPERTIES

|                            |   |
|----------------------------|---|
| <b>Clonality</b>           | Polyclonal  |
| <b>Clone ID</b>            |   |
| <b>Concentration</b>       | 0.5 mg/mL   |
| <b>Conjugation</b>         | Unconjugated  |
| <b>Purification</b>        | Purified from goat serum by ammonium sulphate precipitation followed by antigen affinity chromatography using the immunizing peptide. |
| <b>Dilution Range</b>      | IHC-4-6µg/ml<br>ELISA-antibody detection limit dilution 1:128000.   |
| <b>Formulation</b>         | 0.5 mg/ml in Tris saline, 0.02% sodium azide, pH7.3 with 0.5% bovine serum albumin.   |
| <b>Isotype</b>             | IgG   |
| <b>Storage Instruction</b> | Store at -20 on receipt and minimise freeze-thaw cycles.  |

### TARGET INFORMATION

|                           |   |
|---------------------------|---|
| <b>Gene ID</b>            | 9037  |
| <b>Gene Symbol</b>        | SEMA5A  |
| <b>Uniprot ID</b>         | SEM5A_HUMAN   |
| <b>Immunogen</b>          |   |
| <b>Region</b>             | Internal  |
| <b>Specificity</b>        | The immunizing peptide corresponds to a part of the extracellular domain. |
| <b>Immunogen Sequence</b> | DEATKKACYSKGKS  |



STJ70970 (4µg/ml) staining of paraffin embedded Human Kidney. Steamed antigen retrieval with citrate buffer pH 6, HRP-staining.

This product is suitable for in-vitro studies under the RESEARCH USE ONLY [RUO] licence. This product must not be used as for diagnostic or other medical purposes.  
St John's Laboratory Ltd, Knowledge Dock Business Centre, University Way, London, E16 2RD | Tel: 0208 223 3081