

Anti-Catalase/CAT antibody (Internal) (STJ70941)

STJ70941

GENERAL INFORMATION

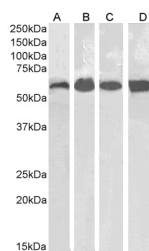
Product Type	Primary antibodies
Short Description	Goat polyclonal antibody anti-Catalase/CAT (Internal) is suitable for use in ELISA, Immunohistochemistry and Flow Cytometry research applications.
Applications	Pep-ELISA, IHC, FC
Host/Source	Goat
Reactivity	Human, Mouse, Dog

PRODUCT PROPERTIES

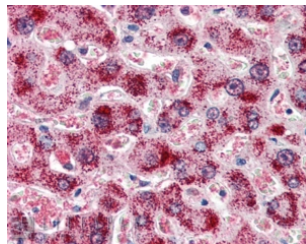
Clonality	Polyclonal
Clone ID	
Concentration	0.5 mg/mL
Conjugation	Unconjugated
Purification	Purified from goat serum by ammonium sulphate precipitation followed by antigen affinity chromatography using the immunizing peptide.
Dilution Range	WB-0.1-0.3µg/ml ELISA-antibody detection limit dilution 1:8000.
Formulation	0.5 mg/ml in Tris saline, 0.02% sodium azide, pH7.3 with 0.5% bovine serum albumin.
Isotype	IgG
Storage Instruction	Store at -20 on receipt and minimise freeze-thaw cycles.

TARGET INFORMATION

Gene ID	847
Gene Symbol	CAT
Uniprot ID	CATA_HUMAN
Immunogen	
Immunogen Region	Internal
Specificity	
Immunogen Sequence	DKYNAEKPKNAIHT



STJ70941 (0.1µg/ml) staining of Human Kidney (A) and Liver (B) and Mouse Kidney (C) and Liver (D) lysates (35µg protein in RIPA buffer). Detected by chemiluminescence.



STJ70941 (2µg/ml) staining of paraffin embedded Human Liver. Steamed antigen retrieval with citrate buffer pH 6, AP-staining. This data is from a previous batch, not on sale.

This product is suitable for in-vitro studies under the RESEARCH USE ONLY [RUO] licence. This product must not be used as for diagnostic or other medical purposes.
St John's Laboratory Ltd, Knowledge Dock Business Centre, University Way, London, E16 2RD | Tel: 0208 223 3081