

Anti-FRA1/FOSL1 antibody (Internal) (STJ70940)

STJ70940

GENERAL INFORMATION

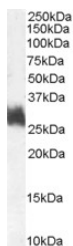
| | |
|--------------------------|--|
| Product Type | Primary antibodies |
| Short Description | Goat polyclonal antibody anti-FRA1/FOSL1 (Internal) is suitable for use in ELISA and Flow Cytometry research applications. |
| Applications | Pep-ELISA, FC |
| Host/Source | Goat |
| Reactivity | Human, Mouse, Rat, Dog, Pig, Cow |

PRODUCT PROPERTIES

| | |
|----------------------------|---|
| Clonality | Polyclonal |
| Clone ID | |
| Concentration | 0.5 mg/mL |
| Conjugation | Unconjugated |
| Purification | Purified from goat serum by ammonium sulphate precipitation followed by antigen affinity chromatography using the immunizing peptide. |
| Dilution Range | WB-0.1-0.3µg/ml ELISA-antibody detection limit dilution 1:1000. |
| Formulation | 0.5 mg/ml in Tris saline, 0.02% sodium azide, pH7.3 with 0.5% bovine serum albumin. |
| Isotype | IgG |
| Storage Instruction | Store at-20 on receipt and minimise freeze-thaw cycles. |

TARGET INFORMATION

| | |
|---------------------------|---|
| Gene ID | 8061 |
| Gene Symbol | FOSL1 |
| Uniprot ID | FOSL1_HUMAN |
| Immunogen | |
| Immunogen Region | Internal |
| Specificity | No cross-reactivity is expected with V-FOS. |
| Immunogen Sequence | QREIEELQKQKER |



STJ70940 (1µg/ml) staining of Human Bone Marrow lysate (55µg protein in RIPA buffer). Primary incubation was 1 hour. Detected by chemiluminescence.

This product is suitable for in-vitro studies under the RESEARCH USE ONLY [RUO] licence. This product must not be used as for diagnostic or other medical purposes.
St John's Laboratory Ltd, Knowledge Dock Business Centre, University Way, London, E16 2RD | Tel: 0208 223 3081